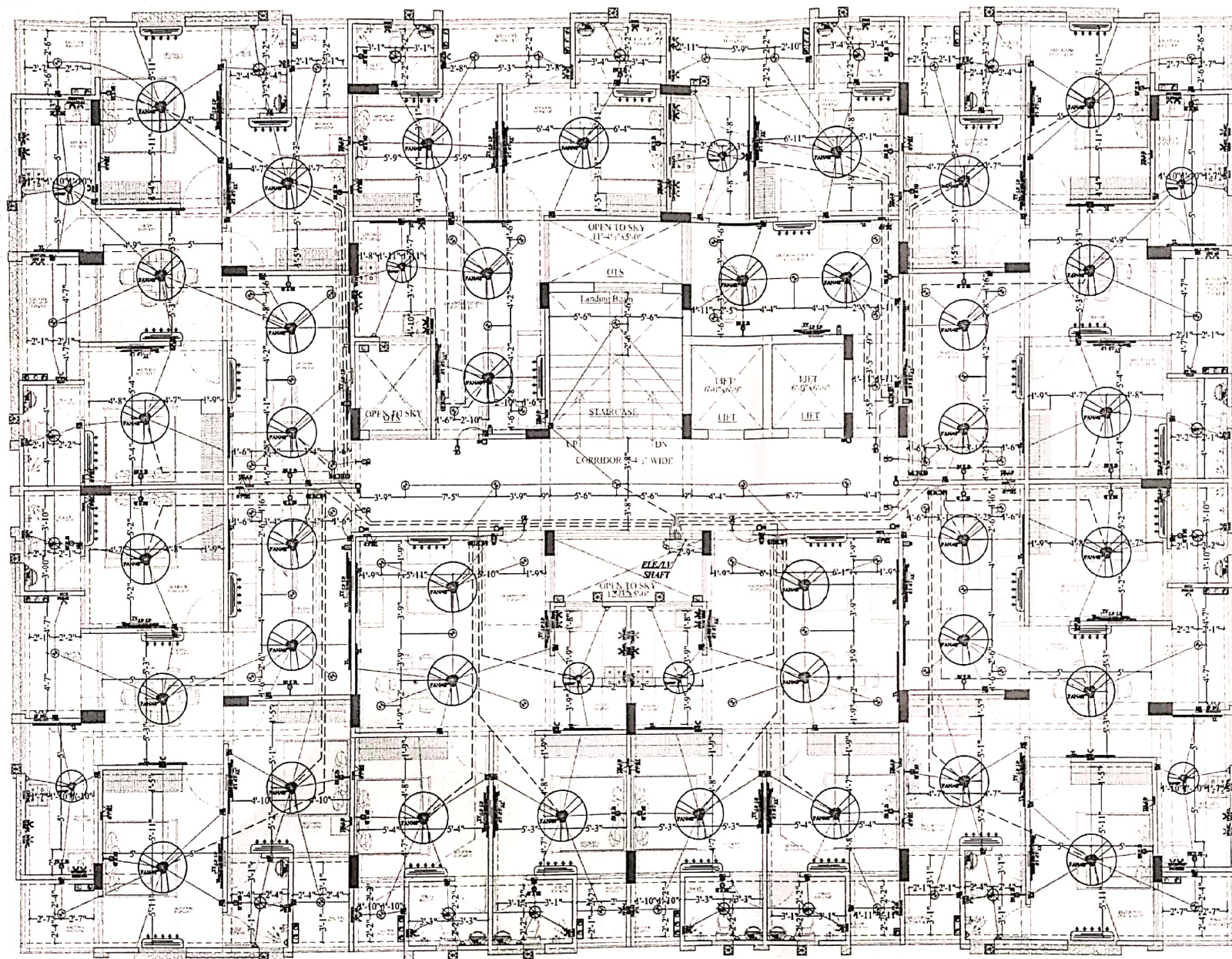


*Vipul*  
**VIPUL AGARWAL**  
**M.E.P. CONSULTANT**  
**B.E. ELECTRICAL**

LEGENDS:					
Mouting Height	QTY:	ID	SYMBOL	DESCRIPTION	
IN RCC SLAB	CONDUIT			Rigid P.V.C Conduit 25mm/1.5 sqmm wire for Light power	
IN RCC SLAB	CONDUIT			Rigid P.V.C Conduit 25mm/2.5 sqmm wire for Light Circuits	
IN RCC SLAB	CONDUIT			Rigid P.V.C Conduit 25mm/4.0 sqmm wire for POWER Circuits	
IN RCC SLAB	CONDUIT			Submain wire to DB from Main Panel on Ground Floor in 1 nos. 12 mm dia conductors	
CEILING	2"	TL C		LED TL BE LIGHT MAKE SYSA 4 LED CAT NO. SSR-TS-20W	
CEILING	01	FAN 48"		CEILING FAN 48"	
CEILING	21	CFL		LED 6" DOWNLIGHTER 15W (SURFACE MOUNTED) MAKE SYSA LED CAT NO. SFL-15W GLD 6.5K/4K	
+42"	05	SB		SWITCH BOARD	
+48"	01	MCR DB		MCR DISTRIBUTION BOARD	
VENTILATOR HT.	01	CR		CEILING ROSE	
VENTILATOR HT.	01	EXF		9" DIA FRESH AIR FAN	
4" BELOW OF BEAM BOTTOM	01	SAC		SPLIT AC INDOOR UNIT	
4" BELOW OF BEAM BOTTOM	01	PP-SAC		POWER POINT FOR SPLIT AC	

	PROJECT:-	PROPOSED RESIDENTIAL BUILDING AT DAKSHINPURI, JAIPUR	DRN. BY:-	VINOD KUMAR	5			ARCHITECTS:-	<b>SPACE GRID</b> C-49, VIDYA APARTMENT, PARAS MARG, BAPU NAGAR, NEAR JANTA STORE CIRCLE, JAIPUR-302015 PH-09314918766, 0141-4005506 (O) Email:-info.spacegrid@gmail.com
	DRAWING:-	STILT FLOOR ELECTRIC CONDUIT PLAN	CHKD. BY:-	SANJAY	4				
			APPD. BY:-	VIPUL AGARWAL	3				
			SCALE:-	N.T.S.	2				
					1	13/04/21	-		
					NO.	DATE	REVISION		

SERVICES CONSULTANT:  
**VIPUL CONSULTING.**  
F 9 / 440 - Keshav Marg Chitrakut Scheme, Jaipur  
PH-91-40-93146-10438, 0141-2440946 Mail:-vipul5599@gmail.com  
REV. NO. 001 DATE:-13-04-2021



TYPICAL 1ST TO 4TH FLOOR PLAN

Vij  
**VIPUL AGARWAL**  
 M.E.P. CONSULTANT  
 B.E. ELECTRICAL

## LEGENDS:

Meaning	No.	I D	Symbol	Description
IN RCC SLAB	CONDUIT			Rigid PVC 25mm dia. Conduit 1.5 sqmm Wire for Light Points
IN RCC SLAB	CONDUIT			Rigid PVC 25mm dia. Conduit 2.5 sqmm Wire for Light Circuits
IN RCC SLAB	CONDUIT			Rigid PVC 25mm dia. Conduit 4 sqmm Wire for Power Circuits
IN RCC SLAB	CONDUIT			Submain Wire to DB from Main Panel on Ground Floor at 1 nos. 12 mm dia Conduit
CEILING	10	FAN 4"		CEILING FAN 4"
CEILING	06	FAN 10"		CEILING FAN 10"
CEILING	15	FB		FAN BOX
CEILING	00	CHI		CHANDILLER
+00"	40	TL/W		1rd Wall Tube Light Make - Syva Led Cat no. - SSC-TS-20W
+00"	42	BUILD		1rd Wall 20W Make - Syva Led Cat no. - SSC-20W 1 TC 3K
+00"	06	GL		WALL BRACKETS AS DESIGN FOR GANESH LIGHT
+78"	15	ML		12x2 Led Mirror Light Make - Syva Led Cat no. - JTL-12x2
CEILING	07	DL		12x6" Down Lighter 20W (Surface Mounted) Make - Syva Led Cat no. - SDI-15W GLD 6.3x4K
VENTILATOR	21	CR		CEILING ROSE
VENTILATOR	21	EXP		9" DIA FRESH AIR FAN
+42"	04	SB		SWITCH BOARD
+24"	27	TEL		TELEPHONE POINT
+24"	27	LP TEL		1A PLUG POINT FOR TELEPHONE
+48"	27	TV		TV COAXIAL POINT
+48"	54	LP TV		1A PLUG POINT FOR TV
+24"	00	LP		1A PLUG POINT FOR SIDE TABLE
+72"	06	LP CH		1A PLUG POINT FOR CHURNEY
+90"	31	SAC		SLUT AT WINDOW UNIT
+42"	06	PP MIX		1A POWER POINT FOR MIXER
+42"	06	PP MIC		1A POWER POINT FOR MICROWAVE
+78"	23	PP-G		1A POWER POINT FOR GEYSER
+54"	06	PP-F		1A POWER POINT FOR FRIDGE
+78"	06	PP-WF		1A POWER POINT FOR WATER PURIFIER
+48"	06	PP-WM		1A POWER POINT FOR WASHING MACHINE
+12"	06	PP-INV		1A POWER POINT FOR INVERTER
+60"	06	BP		1A BELL PUSH
+00"	06	BZ		BELLER FOR CALL HELL
+60"	06	MCB DB		MCB DISTRIBUTION BOARD

## ARCHITECTS:-

## SPACE GRID

C-49, VIDYA APARTMENT, PARAS  
 MARG, BAPU NAGAR, NEAR JANTA  
 STORE CIRCLE, JAIPUR-302015  
 PH-09314916746/0141-4005506 [O]  
 Email-info.spacegrid@gmail.com



PROJECT:-

PROPOSED RESIDENTIAL BUILDING AT DAKSHINPURI, JAIPUR.

DRAWING:-

TYPICAL FLOOR ELECTRIC CONDUIT PLAN

DRN. BY:-

RAJENDER

CKD. BY:-

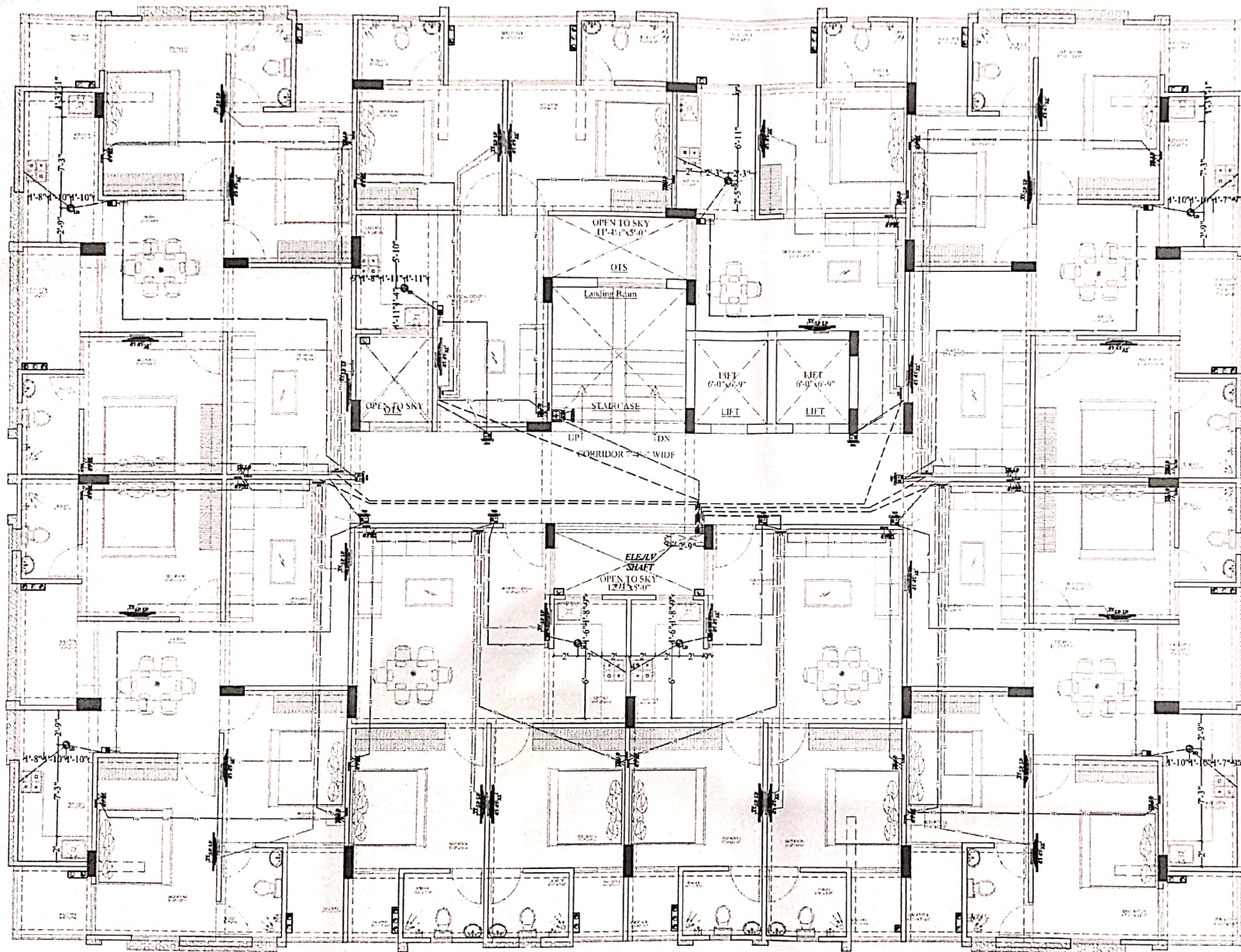
SANJAY

DATE :-

11-05-2021

SERVICES CONSULTANT:  
 VIPUL CONSULTING.

F 9 / 440, Keshav Marg Chitrakut Scheme Jaipur  
 PH-91-0-93146-10438 /0141-2440946 Mail:vipul8599@yahoo.com  
 REV. NO. 000 DATE: 11-05-2021



TYPICAL 1ST TO 4TH FLOOR PLAN

Vipul  
**VIPUL AGARWAL**  
 M.E.P. CONSULTANT  
 B.E. ELECTRICAL

**LEGENDS:**

Mounting Height	No.	I.D.	Symbol	Description
IN FLOOR			CONDUIT	Rigid PVC 25mm dia. Conduit 15mm x 2mm Wire For L&B Wiring
IN FLOOR			CONDUIT	Rigid PVC 25mm dia. Conduit R/W Cable For TV Wiring
IN RCC SLAB			CONDUIT	25mm x 12mm dia. Conduit from Flat LV System to Ring LV Shaft
IN FLOOR			CONDUIT	Rigid PVC 25mm dia. Conduit Run Cable for TV Tag Box to Hollow Core TV
IN RCC SLAB			CONDUIT	Rigid PVC 25mm dia. Conduit For Video Door Phone & Camera
IN RCC SLAB			CONDUIT	Rigid PVC 25mm dia. Conduit 2X1.5 w/ 1mm Copper Wire For Fire Alarm
IN RCC SLAB			CONDUIT	Rigid PVC 25mm dia. Conduit 2X1.5 w/ 1mm Copper Wire For Fire Alarm
+40"	06		NDP CAMERA	VIDEO DOOR PHONE OUTDOOR UNIT WITH BUILT IN CAMERA
+48"	08		NDP	VIDEO DOOR PHONE INDOOR UNIT
+48"	08	PS		PANIC SWITCH
CELLING	08	LD		LPG DETECTOR
+26"	27	TEL		TELEPHONE POINT
+24"	27	LP TEL		1A PLUG POINT FOR TELEPHONE
+48"	27	TV		TV COAXIAL POINT
+48"	54	LP TV		1A PLUG POINT FOR TV
+24"	06			LV JUNK BOX
+42"	01	MCP		MANUAL CALL POINT
+90"	01	HO		HOOTER POINT

**ARCHITECTS:-**

**SPACE GRID**  
 C-49, VIDYA APARTMENT, PARAS  
 MARG, BAPU NAGAR, NEAR JANTA  
 STORE CIRCLE, JAIPUR-302015  
 PH-09314918766, 0141-405506 (C)  
 Email: info.spacegrid@gmail.com



PROJECT:-

PROPOSED RESIDENTIAL BUILDING AT DAKSHINPURI, JAIPUR.

DRAWING:-

**TYPICAL FLOOR LV CONDUIT PLAN**

DRN. BY:-

RAJENDER

CKD. BY:-

SANJAY

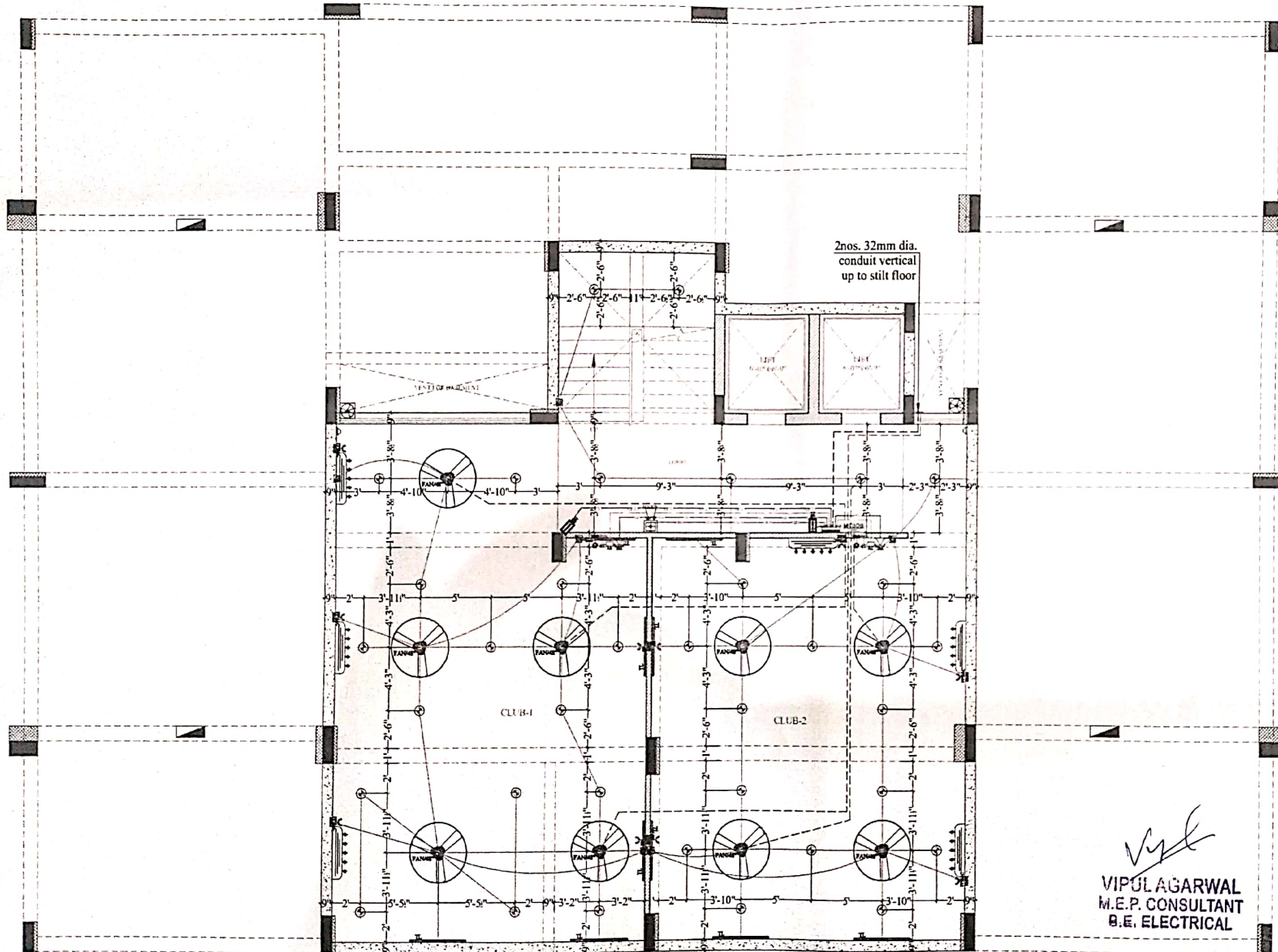
DATE :-

11-05-2021

SERVICES CONSULTANT:

VIPUL CONSULTING.

F 9 / 440 , Keshav Marg Chitrakut Scheme, Jaipur  
 PH-91-0-93146-10438, 0141-2440846, Mail: vipul8599@yahoo.com  
 REV. NO. 000 DATE: 11-05-2021



#### LEGENDS:

Mounting Height	QTY	ID	SYMBOL	DESCRIPTION
IN RCC SLAB	CONDUIT			Rigid PVC 25mm dia. Conduit 1.5 sqmm Wire For Light Points
IN RCC SLAB	CONDUIT			Rigid PVC 25mm dia. Conduit 2.5 sqmm Wire For Light Circuits
IN RCC SLAB	CONDUIT			Rigid PVC 25mm dia. Conduit 4.00 sqmm Wire For Power Circuits
IN RCC SLAB	CONDUIT			Submain Wire to DBI Every Room Panel (on Ground) 3 inch dia. 12mm dia. Conduit
IN FLOOR	CONDUIT			Rigid PVC 25mm dia. Conduit 0.5mm 2 Pair Wire For 16.0 W. Wire
IN FLOOR	CONDUIT			Rigid PVC 25mm dia. Conduit 16.0mm Cable For TV Wiring
IN RCC SLAB	CONDUIT			Rigid PVC 25mm dia. Conduit 3-4 Central Wire, Cat 5/UTP Cable For Security Camera (CCTV)
IN RCC SLAB	CONDUIT			Rigid PVC Conduit 25mm 2X1.5 sq mm Copper Wire for Mtp & Water
IN RCC SLAB	CONDUIT			15mm 12 mm dia Conduit for LV System
CEILING	09	FAN 48"		CEILING FAN 48"
+90"	10	TLW		LED WALL FLUORE LIGHT MAKE SYSKA LED CAT NO. SSX-2008
CEILING	35	DL		LED 4" DOWNLIGHTER 15W (SURFACE MOUNTED) MAKE SYSKA LED CAT NO. SSX-15W GLD 6.5K-4K
+42"	06	SB		SWITCH BOARD
VENTILATOR	02	CR		CEILING ROSE
VENTILATOR	02	EXI		8" DIA FRESH AIR FAN
+18"	02	SET		1 No. Telephone Jack, 1 No. TV Coaxial Point, 1 No. 8A Socket Controlled by 8A Switch & 1 No. 16A 5Pin Socket Controlled by 16A Switch
+90"	06	SAC		SPLIT AC INDOOR UNIT
+90"	06	PP.SAC		25 A POWER POINT FOR SPLIT AC
+18"	04	PP		16 A POWER POINT FOR CLUB HOUSE
+60"	01	MCH DB		ACB DISTRIBUTION BOARD
+42"	01	MCP		MANUAL CALL POINT
+90"	01	HT		HOOKER POINT
+90"	02	CCTV		WALL MOUNTED CCTV CAMERA
+24"	01	LV SJB		LV SYSTEM JUNCTION BOX

SERVICES CONSULTANT:  
VIPUL CONSULTING,  
F9/440, Keshav Marg Chitrakut Scheme, Jaipur  
PH: 91-0-9146-10438, 0141-2440940  
Mail: vipul5992@yahoo.com

#### ARCHITECT :-

**SPACE GRID**  
C-49, VIDYA  
APARTMENT, PARAS MARG,  
BAPU NAGAR, NEAR JANTA  
STORE CIRCLE, JAIPUR-302015  
PH-09314918766, 0141-4005506 (0)  
Email: info.spacegrid@gmail.com

#### PROJECT:-

PROPOSED RESIDENTIAL  
BUILDING AT  
DAKSHINPURI, JAIPUR.

#### DRAWING:

BASEMENT FLOOR  
ELECTRIC & LV  
CONDUIT PLAN

DRN. BY:-

DATE

PAWAN

26-02-2021

CHKD. BY:-

SANJAY

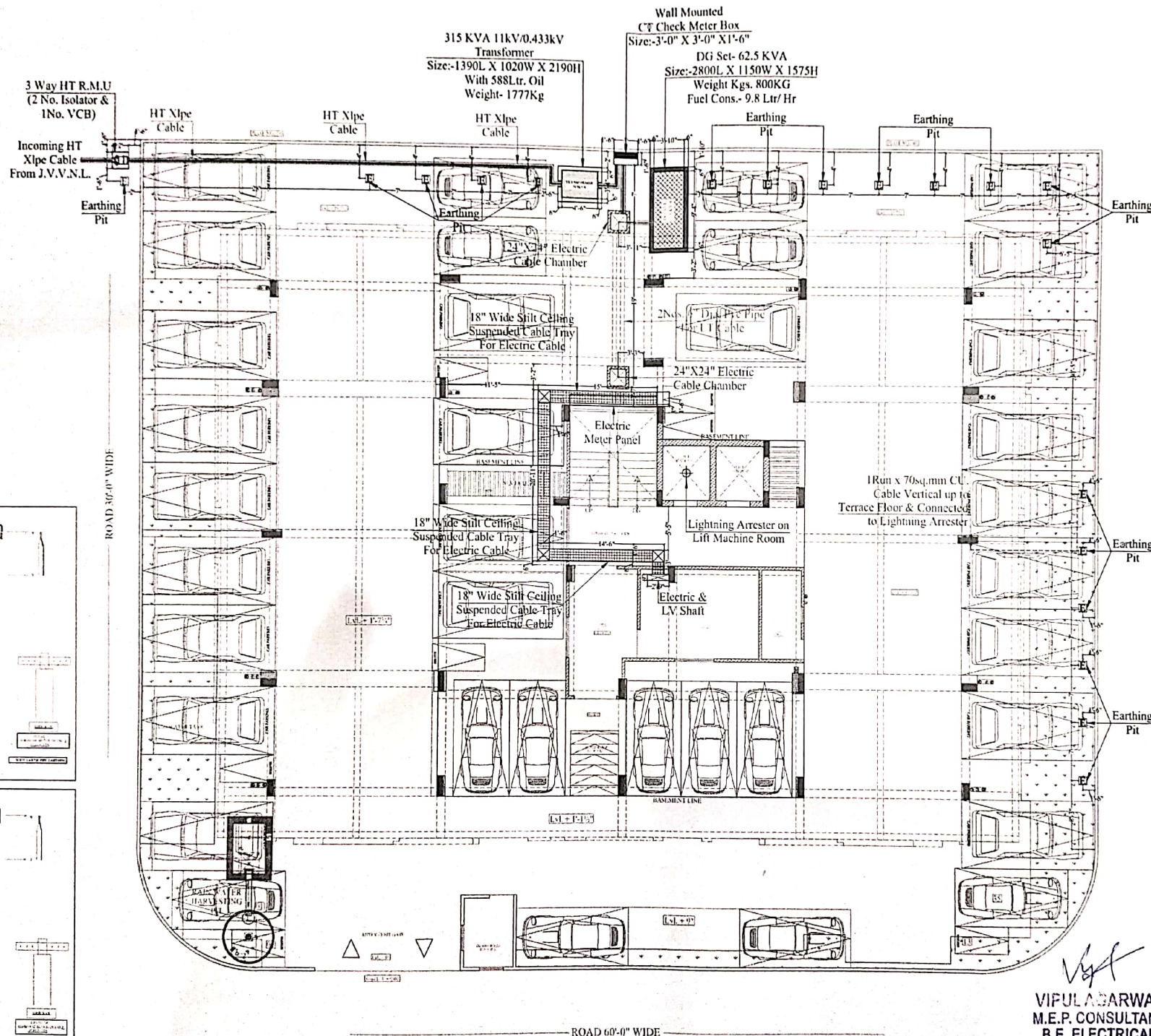
REV:-

APPD. BY:-

VIPUL AGARWAL

00





Lightning  
Arrester

Model: Stormaster – ESE - 30  
(Level 2/Medium Protection)  
(Protection radius - 25M  
Mast Height - 2 Mtr)

#### EARTHING DETAILS

01	25MM PPLZ (METER) : 3 WAY HT R.M.U. BODY EARTH
02	25MM PPLZ (METER) : CT CHECK METER BOX BODY EARTH
03	25MM PPLZ (METER) : TRANSFORMER BODY EARTH
04	25MM PPLZ (METER) : TRANSFORMER NEUTRAL EARTH
05	25MM PPLZ (METER) : DG SET BODY EARTH
06	25MM PPLZ (METER) : DG SET NEUTRAL EARTH
07	25MM PPLZ (METER) : LIGHTNING ARRESTER BODY EARTH
08	25MM PPLZ (METER) : METER PANEL BODY EARTH
09	25MM PPLZ (METER) : TELEPHONE EXCH. BODY EARTH
10	25MM PPLZ (METER) : LIFT PANEL BODY EARTH

#### NOTES

1. ALL NEUTRAL EARTHS TO BE CONNECTED TO 3 GI EARTH STRIP FROM EARTH PIT TO EQUIPMENT.
2. ALL BODY EARTHS TO BE CONNECTED TO 25 X 3 GI EARTH STRIP FROM EARTH PIT TO EQUIPMENT.

SERVICES CONSULTANT  
**ASHI ASSOCIATES**  
19-440, Keshav Marg, Chitrakut Scheme, Jaipur  
(Ph: 0141-2611444, 2611445, 2611446, 2611447, 2611448, 2611449, 2611450, 2611451, 2611452, 2611453, 2611454, 2611455, 2611456, 2611457, 2611458, 2611459, 2611460, 2611461, 2611462, 2611463, 2611464, 2611465, 2611466, 2611467, 2611468, 2611469, 2611470, 2611471, 2611472, 2611473, 2611474, 2611475, 2611476, 2611477, 2611478, 2611479, 2611480, 2611481, 2611482, 2611483, 2611484, 2611485, 2611486, 2611487, 2611488, 2611489, 2611490, 2611491, 2611492, 2611493, 2611494, 2611495, 2611496, 2611497, 2611498, 2611499, 2611500, 2611501, 2611502, 2611503, 2611504, 2611505, 2611506, 2611507, 2611508, 2611509, 2611510, 2611511, 2611512, 2611513, 2611514, 2611515, 2611516, 2611517, 2611518, 2611519, 2611520, 2611521, 2611522, 2611523, 2611524, 2611525, 2611526, 2611527, 2611528, 2611529, 2611530, 2611531, 2611532, 2611533, 2611534, 2611535, 2611536, 2611537, 2611538, 2611539, 2611540, 2611541, 2611542, 2611543, 2611544, 2611545, 2611546, 2611547, 2611548, 2611549, 2611550, 2611551, 2611552, 2611553, 2611554, 2611555, 2611556, 2611557, 2611558, 2611559, 2611560, 2611561, 2611562, 2611563, 2611564, 2611565, 2611566, 2611567, 2611568, 2611569, 2611570, 2611571, 2611572, 2611573, 2611574, 2611575, 2611576, 2611577, 2611578, 2611579, 2611580, 2611581, 2611582, 2611583, 2611584, 2611585, 2611586, 2611587, 2611588, 2611589, 2611590, 2611591, 2611592, 2611593, 2611594, 2611595, 2611596, 2611597, 2611598, 2611599, 2611600, 2611601, 2611602, 2611603, 2611604, 2611605, 2611606, 2611607, 2611608, 2611609, 2611610, 2611611, 2611612, 2611613, 2611614, 2611615, 2611616, 2611617, 2611618, 2611619, 2611620, 2611621, 2611622, 2611623, 2611624, 2611625, 2611626, 2611627, 2611628, 2611629, 2611630, 2611631, 2611632, 2611633, 2611634, 2611635, 2611636, 2611637, 2611638, 2611639, 2611640, 2611641, 2611642, 2611643, 2611644, 2611645, 2611646, 2611647, 2611648, 2611649, 2611650, 2611651, 2611652, 2611653, 2611654, 2611655, 2611656, 2611657, 2611658, 2611659, 2611660, 2611661, 2611662, 2611663, 2611664, 2611665, 2611666, 2611667, 2611668, 2611669, 2611670, 2611671, 2611672, 2611673, 2611674, 2611675, 2611676, 2611677, 2611678, 2611679, 2611680, 2611681, 2611682, 2611683, 2611684, 2611685, 2611686, 2611687, 2611688, 2611689, 2611690, 2611691, 2611692, 2611693, 2611694, 2611695, 2611696, 2611697, 2611698, 2611699, 2611700, 2611701, 2611702, 2611703, 2611704, 2611705, 2611706, 2611707, 2611708, 2611709, 2611710, 2611711, 2611712, 2611713, 2611714, 2611715, 2611716, 2611717, 2611718, 2611719, 2611720, 2611721, 2611722, 2611723, 2611724, 2611725, 2611726, 2611727, 2611728, 2611729, 2611730, 2611731, 2611732, 2611733, 2611734, 2611735, 2611736, 2611737, 2611738, 2611739, 2611740, 2611741, 2611742, 2611743, 2611744, 2611745, 2611746, 2611747, 2611748, 2611749, 2611750, 2611751, 2611752, 2611753, 2611754, 2611755, 2611756, 2611757, 2611758, 2611759, 2611760, 2611761, 2611762, 2611763, 2611764, 2611765, 2611766, 2611767, 2611768, 2611769, 2611770, 2611771, 2611772, 2611773, 2611774, 2611775, 2611776, 2611777, 2611778, 2611779, 2611780, 2611781, 2611782, 2611783, 2611784, 2611785, 2611786, 2611787, 2611788, 2611789, 2611790, 2611791, 2611792, 2611793, 2611794, 2611795, 2611796, 2611797, 2611798, 2611799, 2611800, 2611801, 2611802, 2611803, 2611804, 2611805, 2611806, 2611807, 2611808, 2611809, 2611810, 2611811, 2611812, 2611813, 2611814, 2611815, 2611816, 2611817, 2611818, 2611819, 2611820, 2611821, 2611822, 2611823, 2611824, 2611825, 2611826, 2611827, 2611828, 2611829, 2611830, 2611831, 2611832, 2611833, 2611834, 2611835, 2611836, 2611837, 2611838, 2611839, 2611840, 2611841, 2611842, 2611843, 2611844, 2611845, 2611846, 2611847, 2611848, 2611849, 2611850, 2611851, 2611852, 2611853, 2611854, 2611855, 2611856, 2611857, 2611858, 2611859, 2611860, 2611861, 2611862, 2611863, 2611864, 2611865, 2611866, 2611867, 2611868, 2611869, 2611870, 2611871, 2611872, 2611873, 2611874, 2611875, 2611876, 2611877, 2611878, 2611879, 2611880, 2611881, 2611882, 2611883, 2611884, 2611885, 2611886, 2611887, 2611888, 2611889, 2611890, 2611891, 2611892, 2611893, 2611894, 2611895, 2611896, 2611897, 2611898, 2611899, 2611900, 2611901, 2611902, 2611903, 2611904, 2611905, 2611906, 2611907, 2611908, 2611909, 2611910, 2611911, 2611912, 2611913, 2611914, 2611915, 2611916, 2611917, 2611918, 2611919, 2611920, 2611921, 2611922, 2611923, 2611924, 2611925, 2611926, 2611927, 2611928, 2611929, 2611930, 2611931, 2611932, 2611933, 2611934, 2611935, 2611936, 2611937, 2611938, 2611939, 2611940, 2611941, 2611942, 2611943, 2611944, 2611945, 2611946, 2611947, 2611948, 2611949, 2611950, 2611951, 2611952, 2611953, 2611954, 2611955, 2611956, 2611957, 2611958, 2611959, 2611960, 2611961, 2611962, 2611963, 2611964, 2611965, 2611966, 2611967, 2611968, 2611969, 2611970, 2611971, 2611972, 2611973, 2611974, 2611975, 2611976, 2611977, 2611978, 2611979, 2611980, 2611981, 2611982, 2611983, 2611984, 2611985, 2611986, 2611987, 2611988, 2611989, 2611990, 2611991, 2611992, 2611993, 2611994, 2611995, 2611996, 2611997, 2611998, 2611999, 2612000, 2612001, 2612002, 2612003, 2612004, 2612005, 2612006, 2612007, 2612008, 2612009, 2612010, 2612011, 2612012, 2612013, 2612014, 2612015, 2612016, 2612017, 2612018, 2612019, 2612020, 2612021, 2612022, 2612023, 2612024, 2612025, 2612026, 2612027, 2612028, 2612029, 2612030, 2612031, 2612032, 2612033, 2612034, 2612035, 2612036, 2612037, 2612038, 2612039, 2612040, 2612041, 2612042, 2612043, 2612044, 2612045, 2612046, 2612047, 2612048, 2612049, 2612050, 2612051, 2612052, 2612053, 2612054, 2612055, 2612056, 2612057, 2612058, 2612059, 2612060, 2612061, 2612062, 2612063, 2612064, 2612065, 2612066, 2612067, 2612068, 2612069, 2612070, 2612071, 2612072, 2612073, 2612074, 2612075, 2612076, 2612077, 2612078, 2612079, 2612080, 2612081, 2612082, 2612083, 2612084, 2612085, 2612086, 2612087, 2612088, 2612089, 2612090, 2612091, 2612092, 2612093, 2612094, 2612095, 2612096, 2612097, 2612098, 2612099, 2612100, 2612101, 2612102, 2612103, 2612104, 2612105, 2612106, 2612107, 2612108, 2612109, 2612110, 2612111, 2612112, 2612113, 2612114, 2612115, 2612116, 2612117, 2612118, 2612119, 2612120, 2612121, 2612122, 2612123, 2612124, 2612125, 2612126, 2612127, 2612128, 2612129, 2612130, 2612131, 2612132, 2612133, 2612134, 2612135, 2612136, 2612137, 2612138, 2612139, 2612140, 2612141, 2612142, 2612143, 2612144, 2612145, 2612146, 2612147, 2612148, 2612149, 2612150, 2612151, 2612152, 2612153, 2612154, 2612155, 2612156, 2612157, 2612158, 2612159, 2612160, 2612161, 2612162, 2612163, 2612164, 2612165, 2612166, 2612167, 2612168, 2612169, 2612170, 2612171, 2612172, 2612173, 2612174, 2612175, 2612176, 2612177, 2612178, 2612179, 2612180, 2612181, 2612182, 2612183, 2612184, 2612185, 2612186, 2612187, 2612188, 2612189, 2612190, 2612191, 2612192, 2612193, 2612194, 2612195, 2612196, 2612197, 2612198, 2612199, 2612200, 2612201, 2612202, 2612203, 2612204, 2612205, 2612206, 2612207, 2612208, 2612209, 2612210, 2612211, 2612212, 2612213, 2612214, 2612215, 2612216, 2612217, 2612218, 2612219, 2612220, 2612221, 2612222, 2612223, 2612224, 2612225, 2612226, 2612227, 2612228, 2612229, 2612230, 2612231, 2612232, 2612233, 2612234, 2612235, 2612236, 2612237, 2612238, 2612239, 2612240, 2612241, 2612242, 2612243, 2612244, 2612245, 2612246, 2612247, 2612248, 2612249, 2612250, 2612251, 2612252, 2612253, 2612254, 2612255, 2612256, 2612257, 2612258, 2612259, 2612260, 2612261, 2612262, 2612263, 2612264, 2612265, 2612266, 2612267, 2612268, 2612269, 2612270, 2612271, 2612272, 2612273, 2612274, 2612275, 2612276, 2612277, 2612278, 2612279, 2612280, 2612281, 2612282, 2612283, 2612284, 2612285, 2612286, 2612287, 2612288, 2612289, 2612290, 2612291, 2612292, 2612293, 2612294, 2612295, 2612296, 2612297, 2612298, 2612299, 2612300, 2612301, 2612302, 2612303, 2612304, 2612305, 2612306, 2612307, 2612308, 2612309, 2612310, 2612311, 2612312, 2612313, 2612314, 2612315, 2612316, 2612317, 2612318, 2612319, 2612320, 2612321, 2612322, 2612323, 2612324, 2612325, 2612326, 2612327, 2612328, 2612329, 2612330, 2612331, 2612332, 2612333, 2612334, 2612335, 2612336, 2612337, 2612338, 2612339, 2612340, 2612341, 2612342, 2612343, 2612344, 2612345, 2612346, 2612347, 2612348, 2612349, 2612350, 2612351, 2612352, 2612353, 2612354, 2612355, 2612356, 2612357, 2612358, 2612359, 2612360, 2612361, 2612362, 2612363, 2612364, 2612365, 2612366, 2612367, 2612368, 2612369, 2612370, 2612371, 2612372, 2612373, 2612374, 2612375, 2612376, 2612377, 2612378, 2612379, 2612380, 2612381, 2612382, 2612383, 2612384, 2612385, 2612386, 2612387, 2612388, 2612389, 2612390, 2612391, 2612392, 2612393, 2612394, 2612395, 2612396, 2612397, 2612398, 2612399, 2612400, 2612401, 2612402, 2612403, 2612404, 2612405, 2612406, 2612407, 2612408, 2612409, 2612410, 2612411, 2612412, 2612413, 2612414, 2612415, 2612416, 2612417, 2612418, 2612419, 2612420, 2612421, 2612422, 2612423, 2612424, 2612425, 2612426, 2612427, 2612428, 2612429, 2612430, 2612431, 2612432, 2612433, 2612434, 2612435, 2612436, 2612437, 2612438, 2612439, 2612440, 2612441, 2612442, 2612443, 2612444, 2612445, 2612446, 2612447, 2612448, 2612449, 2612450, 2612451, 2612452, 2612453, 2612454, 2612455, 2612456, 2612457, 2612458, 2612459, 2612460, 2612461, 2612462, 2612463, 2612464, 2612465, 2612466, 2612467, 2612468, 2612469, 2612470, 2612471, 2612472, 2612473, 2612474, 2612475, 2612476, 2612477, 2612478, 2612479, 2612480, 2612481, 2612482, 2612483, 2612484, 2612485, 2612486, 2612487, 2612488, 2612489, 2612490, 2612491, 2612492, 2612493, 2612494, 2612495, 2612496, 2612497, 2612498, 2612499, 2612500, 2612501, 2612502, 2612503, 2612504, 2612505, 2612506, 2612507, 2612508, 2612509, 2612510, 2612511, 2612512, 2612513, 2612514, 2612515, 2612516, 2612517, 2612518, 2612519, 2612520, 2612521, 2612522, 2612523, 2612524, 2612525, 2612526, 2612527, 2612528, 2612529, 2612530, 2612531, 2612532, 2612533, 2612534, 2612535, 2612536, 2612537, 2612538, 2612539, 2612540, 2612541, 2612542, 2612543, 2612544, 2612545, 2612546, 2612547, 2612548, 2612549, 2612550, 2612551, 2612552, 2612553, 2612554, 2612555, 2612556, 2612557, 2612558, 2612559, 2612560, 2612561, 2612562, 2612563, 2612564, 2612565, 2612566, 2612567, 2612568, 2612569, 2612570, 2612571, 2612572, 2612573, 2612574, 2612575, 2612576, 2612577, 2612578, 2612579, 2612580, 2612581, 2612582, 2612583, 2612584, 2612585, 2612586, 2612587, 2612588, 2612589, 2612590, 2612591, 2612592, 2612593, 2612594, 2612595, 2612596, 2612597, 2612598, 2612599, 2612600, 2612601, 2612602, 2612603, 2612604, 2612605, 2612606, 2612607, 2612608, 2612609, 2612610, 2612611, 2612612, 2612613, 2612614, 2612615, 2612616, 2612617, 2612618, 2612619, 2612620, 2612621, 2612622, 2612623, 2612624, 2612625, 2612626, 2612627, 2612628, 2612629, 2612630, 2612631, 2612632, 2612633, 2612634, 2612635, 2612636, 2612637, 2612638, 2612639, 2612640, 2612641, 2612642, 2612643, 2612644, 2612645, 2612646, 2612647, 2612648, 2612649, 2612650, 2612651, 2612652, 2612653, 2612654, 2612655, 2612656, 2612657, 2612658, 2612659, 2612660, 2612661, 2612662