

FIRST TO SECOND FLOOR COLUMN LAYOUT PLAN



RK Bhola (C.E.A.I-M-313)

NOTE

- 1- FOR GENERAL NOTES REFER DWG NO.635/S/100
- 2- ALL DIMENSIONS ARE IN mm.
- 3- CON. MIX -M25.
- 4- GRADE OF REIN - Fe 500.
- 5- THIS DWG. SHALL BE READ WITH ALL RELEVANT ARCH. DRAWING.

Rev	Date	Description

OWNERS NAME

**Ashiana Housing Ltd.**

Unit no.4 & 5,Plot No.D-2,3rd Floor,  
Southern park, saket District Centre,  
Saket New Delhi - 110017  
Phone no. 011- 42 65 42 65

PROJECT :

**ASHIANA UMANG  
AT JAIPUR**

ARCHITECT

**b.sengupta architect**

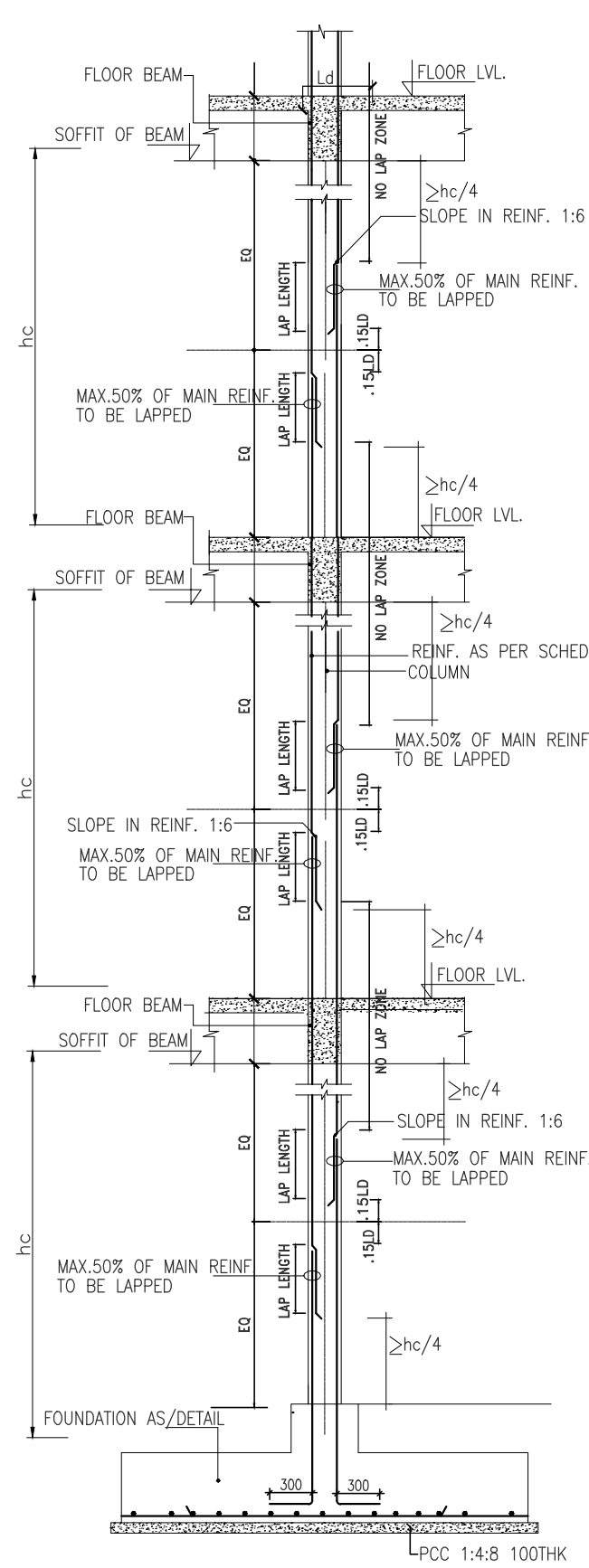
A305,RANGOLI,ASHIANAVILLAGEBHIWADI.  
PH . 09887488263

STRUCTURE ENGINEERS

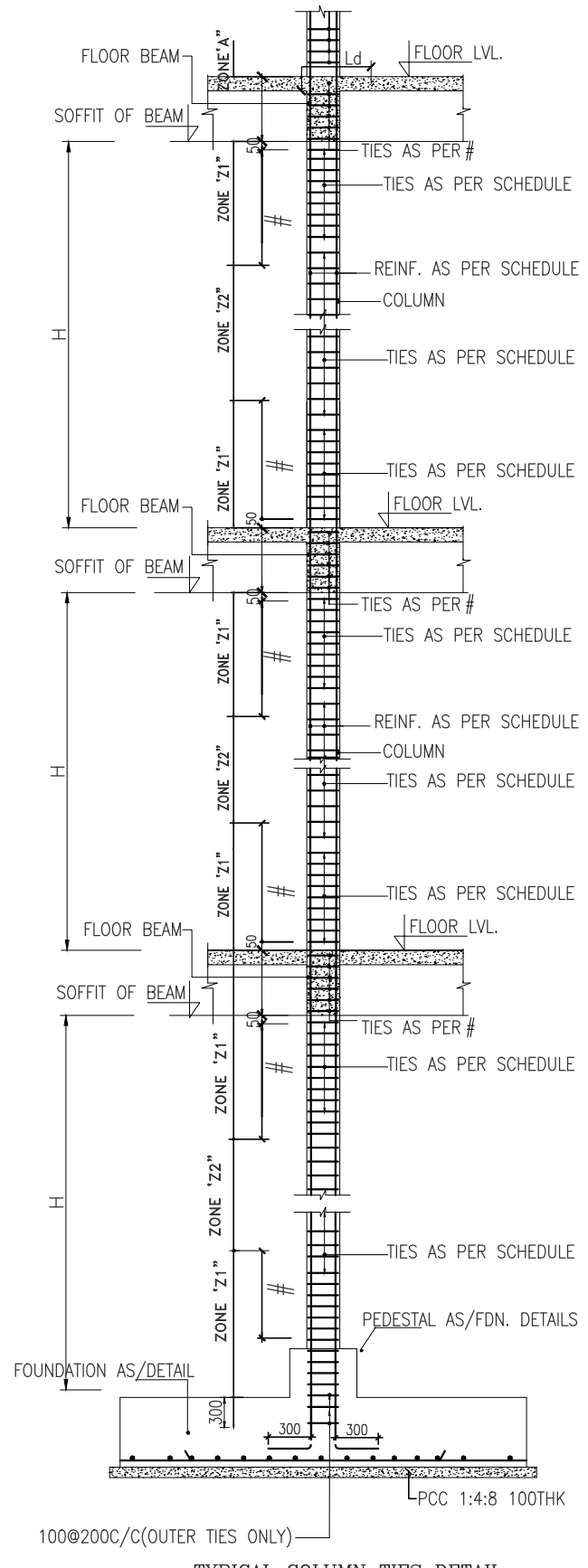


**CIVTECH CONSULTANTS PVT LTD**  
B-62, LAJPAT NAGAR-IV, NEW DELHI-110 024  
A-45 , SECTOR -4 , NOIDA-201301  
PH. NO: 0120-2544084, E-mail - Projects@civtech.in

BUILDING TYPE	ASHIANA UMANG COMMERCIAL		
DRG. TITLE:	SALES OFFICE COLUMN LAYOUT PLAN		
SCALE:	NTS	KEY IN:	
DATE.:	13-05-2024	PLOTTED ON:	
DRAWN BY	CHECKED	APPROVED BY:	
MAHENDER	DEEPAK	RKB.	
DRG. NO. :- 682/S/COM/102A		SHEET	2/2
ISSUED FOR:- SUBMISSION		REV.	

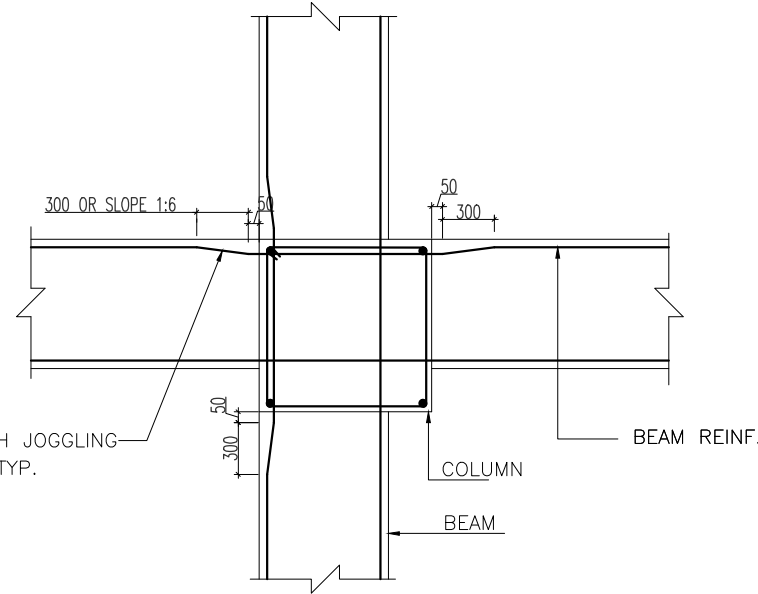


TYPICAL COLUMN LAPPING DETAIL  
COLUMN VERTICAL BARS TO BE LAPPED ALTERNATIVELY IN ONE POSITION WITH STAGGERING NOT MORE THAN 500MM TO BE LAPPED AT ONE SECTION



TYPICAL COLUMN TIES DETAIL

1.  $\# = \frac{H}{6}$  OR LARGER DIMENSION OF COLUMN SIZE OR 450mm,WHICHEVER IS MORE.  
2. SPACING OF TIES IN LAPPING LENGTH WILL NOT BE GREATER THAN 150mm.  
\* PROVIDE HALF SPECIAL CONFINING REINFORCEMENT REQUIRED IN ZONE



REINFORCEMENT DETAILS AT COL. & BEAM JUNCTION (IN PLAN)



RK Bhola (C.E.A.I-M-313)

2ND FLOOR	TO	TERRACE	M30 : Fe500 , COVER = 50mm CONFINING ZONE = 545 MM			M30 : Fe500 , COVER = 50mm CONFINING ZONE = 450 MM			M30 : Fe500 , COVER = 50mm CONFINING ZONE = 450 MM			M30 : Fe500 , COVER = 50mm CONFINING ZONE = 450 MM			M30 : Fe500 , COVER = 50mm CONFINING ZONE = 450 MM			M30 : Fe500 , COVER = 50mm CONFINING ZONE = 675 MM			M30 : Fe500 , COVER = 50mm CONFINING ZONE = 650 MM		
			Z1 MAIN LINK	Z1 OTHERS	Z2 LINKS	Z1 MAIN LINK	Z1 OTHERS	Z2 LINKS	Z1 MAIN LINK	Z1 OTHERS	Z2 LINKS	Z1 MAIN LINK	Z1 OTHERS	Z2 LINKS	Z1 MAIN LINK	Z1 OTHERS	Z2 LINKS	Z1 MAIN LINK	Z1 OTHERS	Z2 LINKS	Z1 MAIN LINK	Z1 OTHERS	Z2 LINKS
			T12 @ 75	T8 @ 75	T8 @ 110	T10 @ 75	T10 @ 75	T8 @ 160	T10 @ 75	T10 @ 75	T8 @ 160	T8 @ 75	T8 @ 75	T8 @ 190	T10 @ 90	T8 @ 90	T8 @ 160	T10 @ 75	T10 @ 75	T8 @ 160	T10 @ 90	T8 @ 90	T8 @ 160
1ST FLOOR	TO	2ND FLOOR	M30 : Fe500 , COVER = 50mm CONFINING ZONE = 545 MM			M30 : Fe500 , COVER = 50mm CONFINING ZONE = 450 MM			M30 : Fe500 , COVER = 50mm CONFINING ZONE = 450 MM			M30 : Fe500 , COVER = 50mm CONFINING ZONE = 450 MM			M30 : Fe500 , COVER = 50mm CONFINING ZONE = 450 MM			M30 : Fe500 , COVER = 50mm CONFINING ZONE = 450 MM			M30 : Fe500 , COVER = 50mm CONFINING ZONE = 545 MM		
			Z1 MAIN LINK	Z1 OTHERS	Z2 LINKS	Z1 MAIN LINK	Z1 OTHERS	Z2 LINKS	Z1 MAIN LINK	Z1 OTHERS	Z2 LINKS	Z1 MAIN LINK	Z1 OTHERS	Z2 LINKS	Z1 MAIN LINK	Z1 OTHERS	Z2 LINKS	Z1 MAIN LINK	Z1 OTHERS	Z2 LINKS	Z1 MAIN LINK	Z1 OTHERS	Z2 LINKS
			T12 @ 75	T8 @ 75	T8 @ 110	T12 @ 75	T8 @ 75	T8 @ 110	T10 @ 75	T10 @ 75	T8 @ 160	T10 @ 75	T10 @ 75	T8 @ 160	T8 @ 75	T8 @ 75	T8 @ 190	T10 @ 90	T8 @ 90	T8 @ 160	T10 @ 90	T8 @ 90	T8 @ 160
PLINTH LEVEL	TO	1ST FLOOR	M30 : Fe500 , COVER = 50mm CONFINING ZONE = 525 MM			M30 : Fe500 , COVER = 50mm CONFINING ZONE = 525 MM			M30 : Fe500 , COVER = 50mm CONFINING ZONE = 525 MM			M30 : Fe500 , COVER = 50mm CONFINING ZONE = 525 MM			M30 : Fe500 , COVER = 50mm CONFINING ZONE = 525 MM			M30 : Fe500 , COVER = 50mm CONFINING ZONE = 525 MM			M30 : Fe500 , COVER = 50mm CONFINING ZONE = 525 MM		
			Z1 MAIN LINK	Z1 OTHERS	Z2 LINKS	Z1 MAIN LINK	Z1 OTHERS	Z2 LINKS	Z1 MAIN LINK	Z1 OTHERS	Z2 LINKS	Z1 MAIN LINK	Z1 OTHERS	Z2 LINKS	Z1 MAIN LINK	Z1 OTHERS	Z2 LINKS	Z1 MAIN LINK	Z1 OTHERS	Z2 LINKS	Z1 MAIN LINK	Z1 OTHERS	Z2 LINKS
			T10 @ 75	T10 @ 75	T8 @ 160	T10 @ 75	T10 @ 75	T8 @ 160	T10 @ 75	T10 @ 75	T8 @ 160	T8 @ 75	T8 @ 75	T8 @ 190	T10 @ 90	T8 @ 90	T8 @ 160	T10 @ 90	T8 @ 90	T8 @ 160	T10 @ 90	T8 @ 90	T8 @ 160
BASE	TO	PLINTH LEVEL	M30 : Fe500 , COVER = 50mm CONFINING ZONE = FULL HEIGHT			M30 : Fe500 , COVER = 50mm CONFINING ZONE = FULL HEIGHT			M30 : Fe500 , COVER = 50mm CONFINING ZONE = FULL HEIGHT			M30 : Fe500 , COVER = 50mm CONFINING ZONE = FULL HEIGHT			M30 : Fe500 , COVER = 50mm CONFINING ZONE = FULL HEIGHT			M30 : Fe500 , COVER = 50mm CONFINING ZONE = FULL HEIGHT			M30 : Fe500 , COVER = 50mm CONFINING ZONE = FULL HEIGHT		
			Z1 MAIN LINK	Z1 OTHERS	Z2 LINKS	Z1 MAIN LINK	Z1 OTHERS	Z2 LINKS	Z1 MAIN LINK	Z1 OTHERS	Z2 LINKS	Z1 MAIN LINK	Z1 OTHERS	Z2 LINKS	Z1 MAIN LINK	Z1 OTHERS	Z2 LINKS	Z1 MAIN LINK	Z1 OTHERS	Z2 LINKS	Z1 MAIN LINK	Z1 OTHERS	Z2 LINKS
			T10 @ 90	T8 @ 90	---	T10 @ 75	T10 @ 75	---	T8 @ 75	T8 @ 75	---	T10 @ 90	T8 @ 90	---	T10 @ 90	T8 @ 90	---	T10 @ 90	T8 @ 90	---	T10 @ 75	T10 @ 75	---
COL MKD.			C1			C2			C2A			C3			C4			C5			C6		
			10-T16			4-T16 + 6-T12			4-T16 + 8-T12			10-T16			10-T16			4-T12			10-T16		
			C7A UP TO MID LANDING			C8			C9			C10			C11								

COLUMN SCHEDULE  
(SCALE 1:25)

## NOTE

- FOR GENERAL NOTES REFER DWG NO.635/S/100
- ALL DIMENSIONS ARE IN mm.
- CON. MIX -AS/SCHEDULE
- GRADE OF REIN - Fe 500.
- THIS DWG. SHALL BE READ WITH ALL RELEVANT ARCH. DRAWING.

Rev	Date	Description

OWNERS NAME

**Ashiana Housing Ltd.**

Unit no.4 & 5,Plot No.D-2,3rd Floor,  
Southern park, saket District Centre,  
Saket New Delhi - 110017  
Phone no. 011- 42 65 42 65

PROJECT :

**ASHIANA UMANG  
AT JAIPUR**

ARCHITECT

**b.sengupta architect**

A305,RANGOLI,ASHIANAVILLAGEBHWADI.  
PH. 09887488263

STRUCTURE ENGINEERS

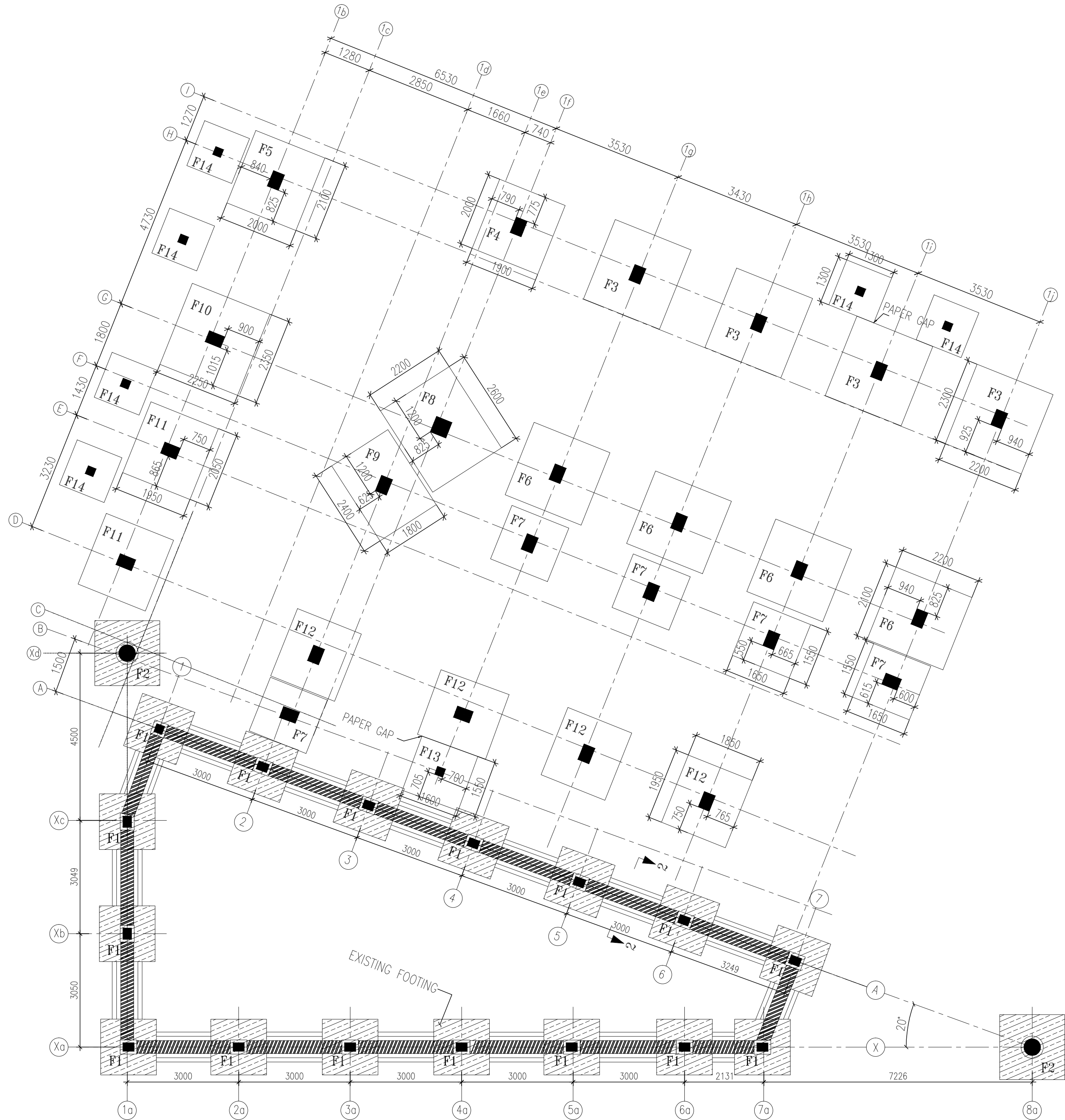
**CIVTECH CONSULTANTS PVT LTD**  
B-62, LAJPAT NAGAR-IV, NEW DELHI-110 024  
A-45 , SECTOR -4 , NOIDA-201301  
PH. NO. : 0120-2544084, E-mail - Projects@civtech.in

BUILDING TYPE  
**ASHIANA UMANG COMMERCIAL**

DRG. TITLE:  
**SALES OFFICE  
COLUMN SCHEDULE**

SCALE: NTS		KEY IN:	
DATE.: 13-05-2024		PLOTTED ON:	
DRAWN BY MAHENDER	CHECKED DEEPAK	APPROVED BY: RKB.	
DRG. NO. :- 682/S/COM/103		SHEET	1/1
ISSUED FOR:- SUBMISSION		REV.	

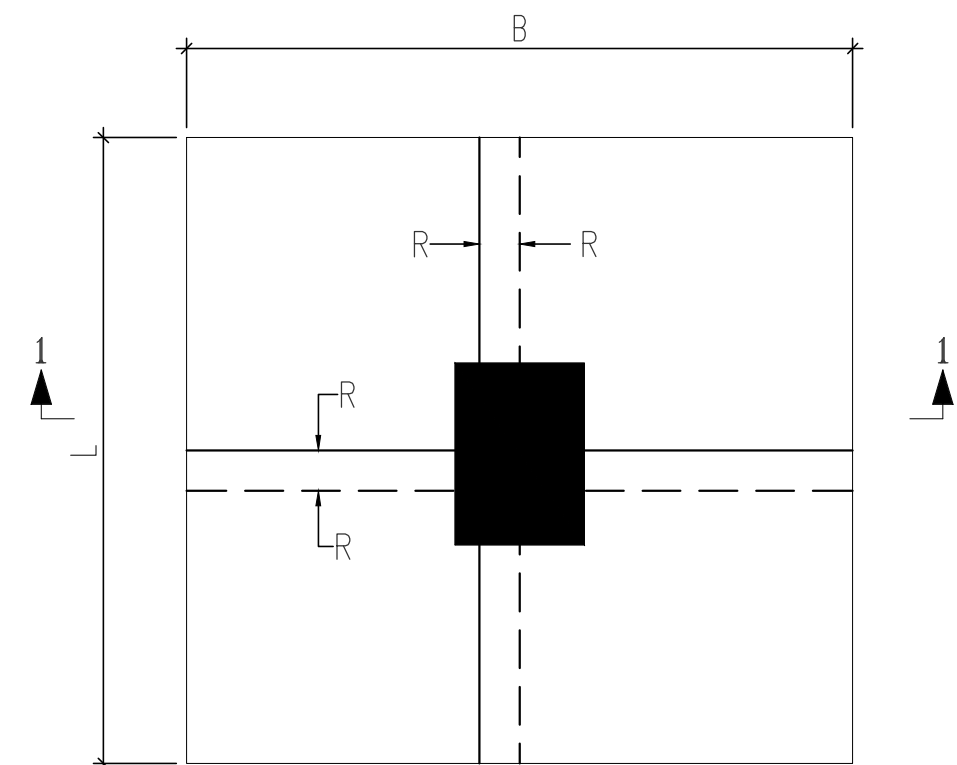




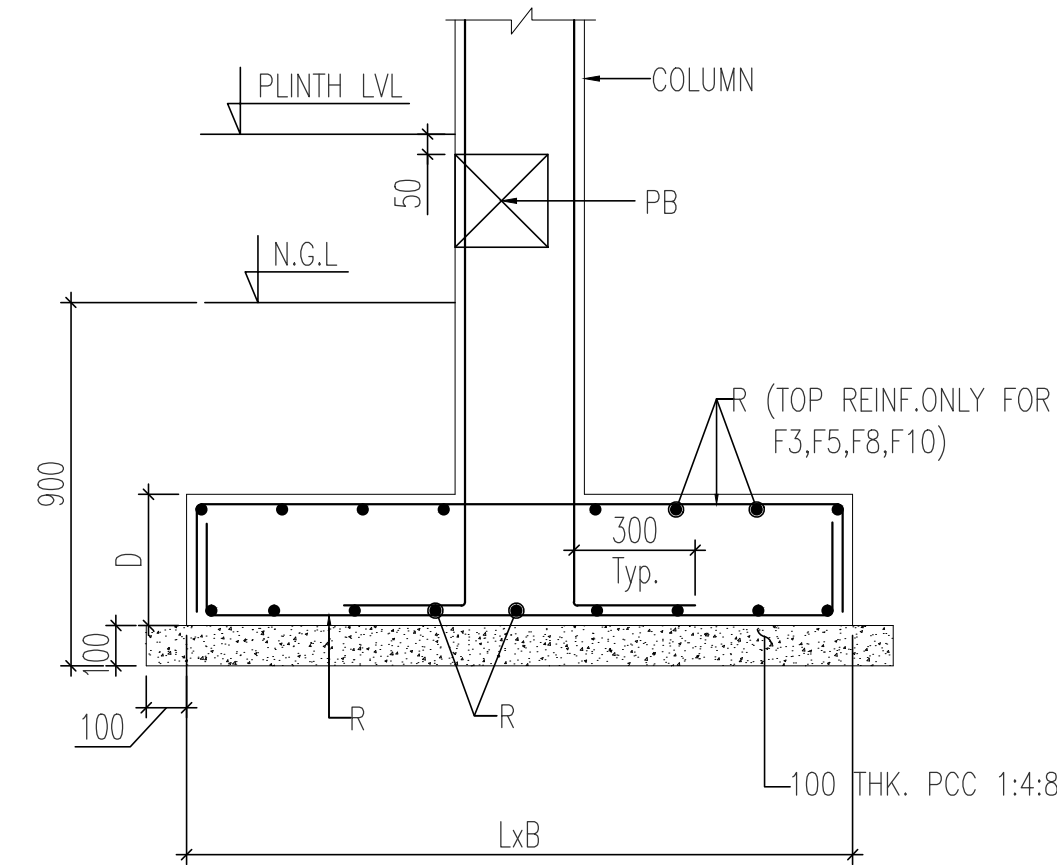
SCHEDULE OF FOOTINGS

FOOTING NO.	FOOTING SIZE LxB	DEPTH OF FOOTING D	REINFORCEMENT BOTTOM		REINFORCEMENT TOP	
			ALONG B	ALONG L	ALONG B	ALONG L
F1	1500x1500	300	10T@150c/c	10T@150c/c		
F2	1750x1750	300	10T@150c/c	10T@150c/c		
F3	2300x2200	600	12T@165c/c	12T@160c/c	10T@200c/c	10T@200c/c
F4	2000x1900	450	12T@200c/c	12T@200c/c		
F5	2100x2000	575	12T@175c/c	12T@170c/c	10T@200c/c	10T@200c/c
F6	2100x2200	500	12T@195c/c	12T@200c/c		
F7	1550x1650	375	12T@200c/c	12T@200c/c		
F8	2200x2600	600	12T@160c/c	12T@165c/c	10T@200c/c	10T@200c/c
F9	1800x2400	600	12T@165c/c	12T@160c/c		
F10	2350x2250	600	12T@170c/c	12T@165c/c	10T@200c/c	10T@200c/c
F11	2050x1950	475	12T@200c/c	12T@200c/c		
F12	1950x1850	425	12T@200c/c	12T@200c/c		
F13	1550x1600	450	12T@200c/c	12T@200c/c		
F14	1300x1300	450	12T@200c/c	12T@200c/c		

FOUNDATION PLAN



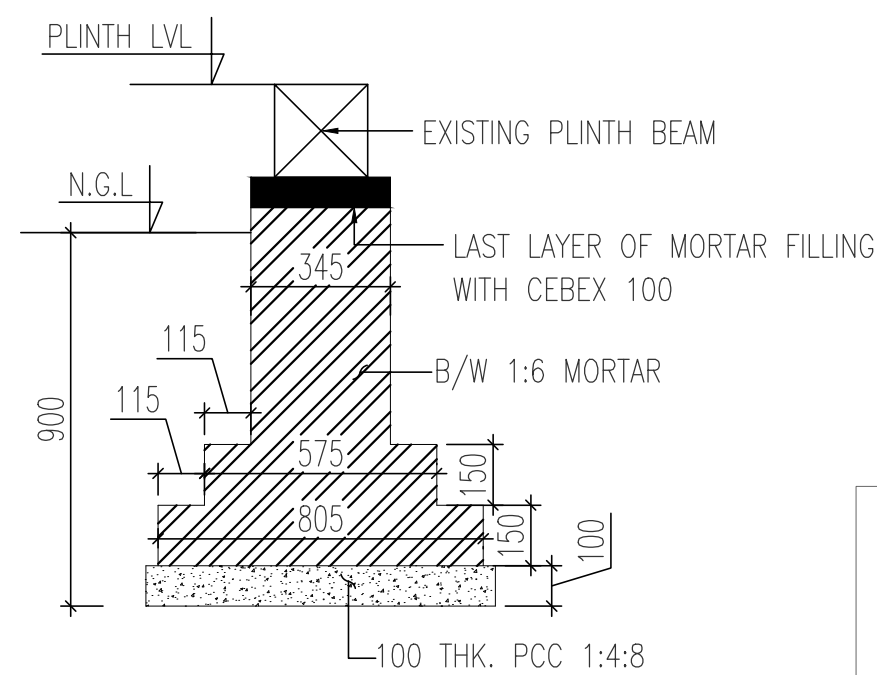
TYP. PLAN OF ISOLATED FOOTING



SECTION 1-1

LEGEND:-

—	TOP REINF
- - -	BOTTOM REINF



SECTION 2-2



RK Bhola (C.E.A.I-M-313)

NOTE

- 1- FOR GENERAL NOTES REFER DWG NO.635/S/100
- 2- ALL DIMENSIONS ARE IN mm.
- 3- CON. MIX -M25.
- 4- GRADE OF REIN - Fe 500.
- 5- THIS DWG. SHALL BE READ WITH ALL RELEVANT ARCH. DRAWING.

Rev	Date	Description

OWNERS NAME

**Ashiana Housing Ltd.**

Unit no.4 & 5,Plot No.D-2,3rd Floor,  
Southern park, saket District Centre,  
Saket New Delhi - 110017  
Phone no. 011- 42 65 42 65

PROJECT :

**ASHIANA UMANG  
AT JAIPUR**

ARCHITECT

**b.sengupta architect**

A305,RANGOLI,ASHIANAVILLAGEBHIWADI.  
PH . 09887488263

STRUCTURE ENGINEERS

**CIVTECH CONSULTANTS PVT LTD**  
B-62, LAJPAT NAGAR-IV, NEW DELHI-110 024  
A-45 , SECTOR -4 , NOIDA-201301  
PH. NO: 0120-2544084, E-mail - Projects@civtech.in

BUILDING TYPE ASHIANA UMANG COMMERCIAL

DRG. TITLE: SALES OFFICE  
FOUNDATION PLAN AND DETAIL

SCALE: NTS KEY IN:

DATE.: 13-05-2024 PLOTTED ON:

DRAWN BY CHECKED APPROVED BY:  
MAHENDER DEEPAK RKB.

DRG. NO. :- 682/S/COM/101 SHEET 1/1  
ISSUED FOR:- SUMISSION REV.





1. FOR GENERAL NOTES REFER DRAWING NO.
2. ALL DIMENSIONS ARE IN mm.
3. THIS DRAWING SHALL BE READ WITH ALL RELEVANT ARCH. DRAWING.
4. DO NOT SCALE, FOLLOW WRITTEN DIMENSIONS ONLY.
5. GRADE OF REINF. Fe 500.
6. CONC. MIX - M25 U.O.S.

[illegible]

Unit no.4 & 5,Plot No.D-2,3rd Floor,  
Southern park, saket District Centre,  
Saket New Delhi - 110017  
Phone no. 011- 42 65 42 65

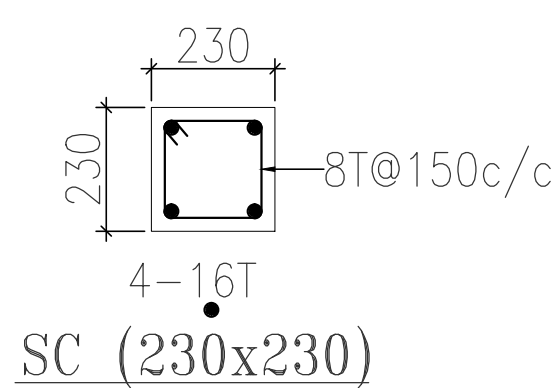
A305,RANGOLI,ASHIANAVILLAGEBHIWADI  
PH . 09887488263

B-62, LAJPAT NAGAR-IV, NEW DELHI-110 024  
A-45, SECTOR -4, NOIDA-201301  
Ph. NO: 0120-2544084, E-mail - Projects@civitech

BUILDING TYPE:	ASHIANA UMANG COMMERCIAL
DRG. TITLE:	SECOND FLOOR BEAM DETAIL

SCALE:		NTS	KEY IN:	
DATE.: 13-05-2024		PLOTTED ON:		
DRAWN BY		CHECKED	APPROVED BY:	
RAJAT		DEEPAK	RKB.	
DRG. NO. :- 682/S/COM/402			REV.	R0
ISSUED FOR:- SUBMISSION				



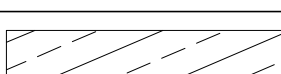




RK Bhola (C.E.A.I-M-313)



LEGEND:—

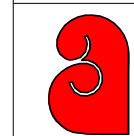
(#)-LANDING BEAM	
LB1- LINTEL BEAM	
	T.O.S +7050
	T.O.S +7200
	T.O.S +7350

NOTES:-
---------

1. FOR GENERAL NOTES REFER DRAWING NO.
2. ALL DIMENSIONS ARE IN mm.
3. THIS DRAWING SHALL BE READ WITH ALL RELEVANT ARCH. DRAWING.
4. DO NOT SCALE, FOLLOW WRITTEN DIMENSIONS ONLY.
5. GRADE OF REINF. Fe 500.
6. CONC. MIX - M25 U.O.S.

[illegible]

OWNERS NAME	



Ashiana Housing Ltd.

Unit no.4 & 5,Plot No.D-2,3rd Floor,  
Southern park, saket District Centre,  
Saket New Delhi - 110017  
Phone no. 011- 42 65 42 65

PROJECT :
-----------

ASHIANA UMANG  
AT JAIPUR

ARCHITECT

b.sengupta architect

A305,RANGOLI,ASHIANAVILLAGEBHIWADI.  
PH. 09887488263

STRUCTURE ENGINEERS

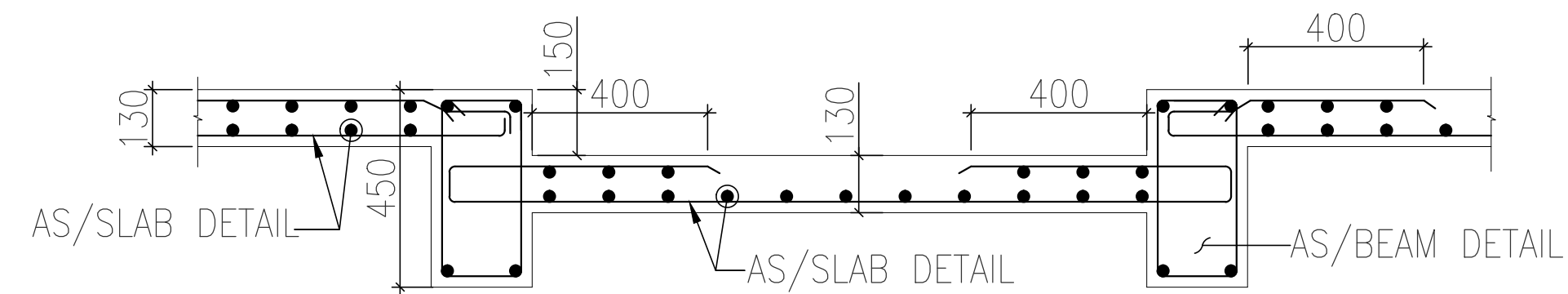


CIVTECH CONSULTANTS PVT LTD

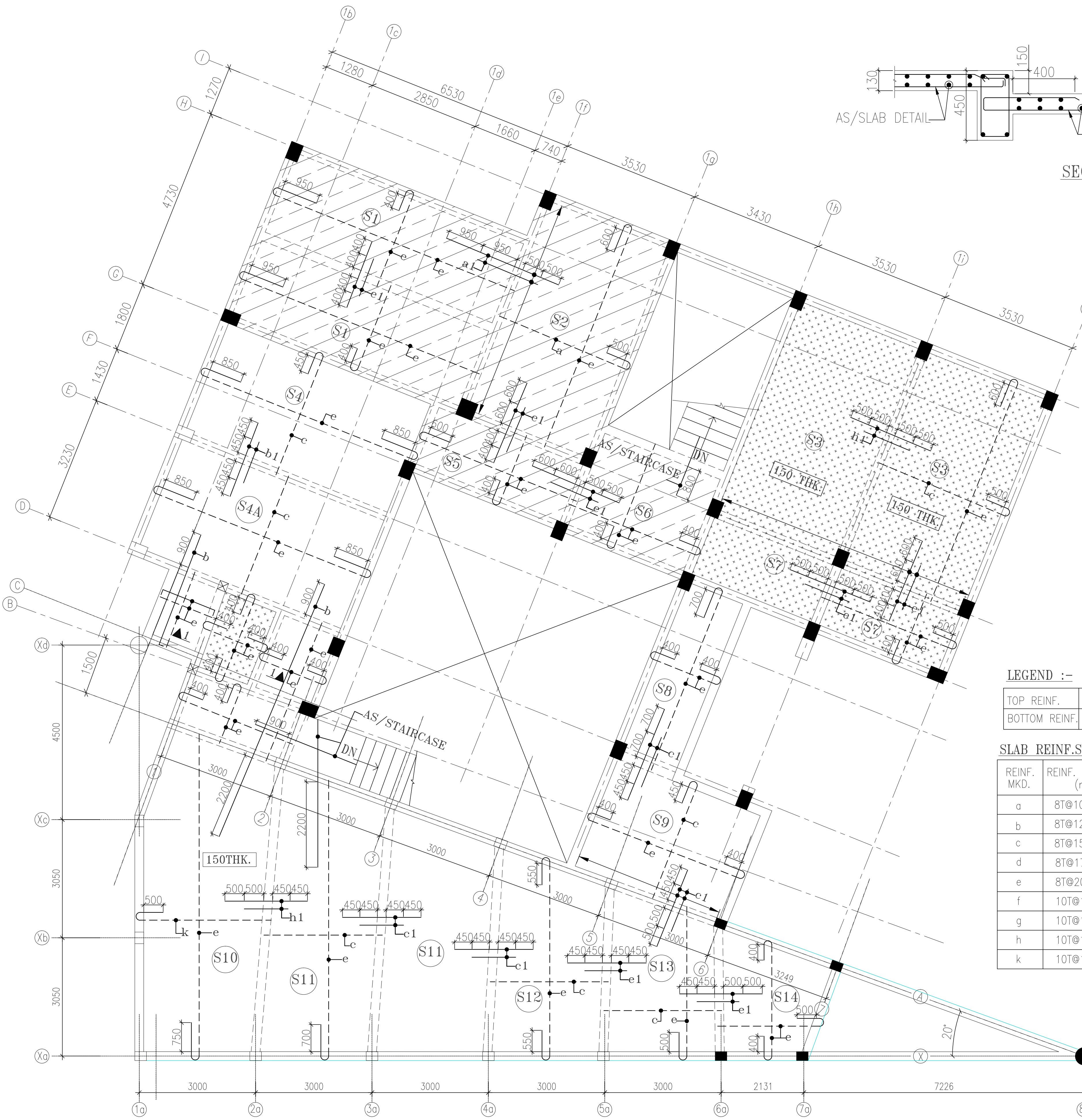
B-62, LAJPAT NAGAR-IV, NEW DELHI-110 024  
A-45, SECTOR -4, NOIDA-201301  
PH. NO: 0120-2544084, E-mail - [Projects@civtech.in](mailto:Projects@civtech.in)

BUILDING TYPE	ASHIANA UMANG COMMERCIAL		
DRG. TITLE:	SECOND FLOOR FRAMING PLAN		
SCALE:	NTS	KEY IN:	
DATE.: 13-05-2024	PLOTTED ON:		
DRAWN BY	CHECKED	APPROVED BY:	
RAJAT	DEEPAK	RKB.	
DRG. NO. :- 682/S/COM/401		REV.	
ISSUED FOR:- SUBMISSION			





SECTION 1-1



RK Bhola (C.E.A.I-M-313)

LEGEND :-

TOP REINF.	→
BOTTOM REINF.	→

SLAB REINF.SCHEDULE

REINF. MKD.	REINF. & SPACING (mm)	REINF. MKD.	REINF. & SPACING (mm)
a	8T@100c/c	a1	8T@200c/c (NET SPACING 8T@100c/c)
b	8T@125c/c	b1	8T@250c/c (NET SPACING 8T@125c/c)
c	8T@150c/c	c1	8T@300c/c (NET SPACING 8T@150c/c)
d	8T@175c/c	d1	8T@350c/c (NET SPACING 8T@175c/c)
e	8T@200c/c	e1	8T@400c/c (NET SPACING 8T@200c/c)
f	10T@100c/c	f1	10T@200c/c (NET SPACING 10T@100c/c)
g	10T@125c/c	g1	10T@250c/c (NET SPACING 10T@125c/c)
h	10T@150c/c	h1	10T@300c/c (NET SPACING 10T@150c/c)
k	10T@175c/c	k1	10T@350c/c (NET SPACING 10T@175c/c)

SECOND FLOOR SLAB DETAIL  
ALL SLAB THICK 130mm U.O.S

- NOTES:-
1. FOR GENERAL NOTES REFER DRAWING NO.
  2. ALL DIMENSIONS ARE IN mm.
  3. THIS DRAWING SHALL BE READ WITH ALL RELEVANT ARCH. DRAWING.
  4. DO NOT SCALE, FOLLOW WRITTEN DIMENSIONS ONLY.
  5. GRADE OF REINF. Fe 500.
  6. CONC. MIX - M25 U.O.S.

Rev	Date	Description

OWNERS NAME  
**Ashiana Housing Ltd.**  
Unit no.4 & 5,Plot No.D-2,3rd Floor,  
Southern park, saket District Centre,  
Saket New Delhi - 110017  
Phone no. 011- 42 65 42 65

PROJECT :  
**ASHIANA UMANG  
AT JAIPUR**

ARCHITECT  
**b.sengupta architect**  
A305,RANGOLI,ASHIANAVILLAGEBHIWADI.  
PH . 09887488263

STRUCTURE ENGINEERS  
**CIVTECH** CIVTECH CONSULTANTS PVT LTD  
B-62, LAJPAT NAGAR-IV, NEW DELHI-110 024  
A-45, SECTOR-4, NOIDA-201301  
PH. NO. 0120-2544084, E-mail - Projects@civtech.in

BUILDING TYPE  
ASHIANA UMANG COMMERCIAL

DRG. TITLE:  
SECOND FLOOR SLAB DETAIL

SCALE: NTS		KEY IN:	
DATE.: 13-05-2024		PLOTTED ON:	
DRAWN BY	CHECKED	APPROVED BY:	
RAJAT	DEEPAK	RKB.	
DRG. NO. :- 682/S/COM/403		REV.	
ISSUED FOR:- SUBMISSION			