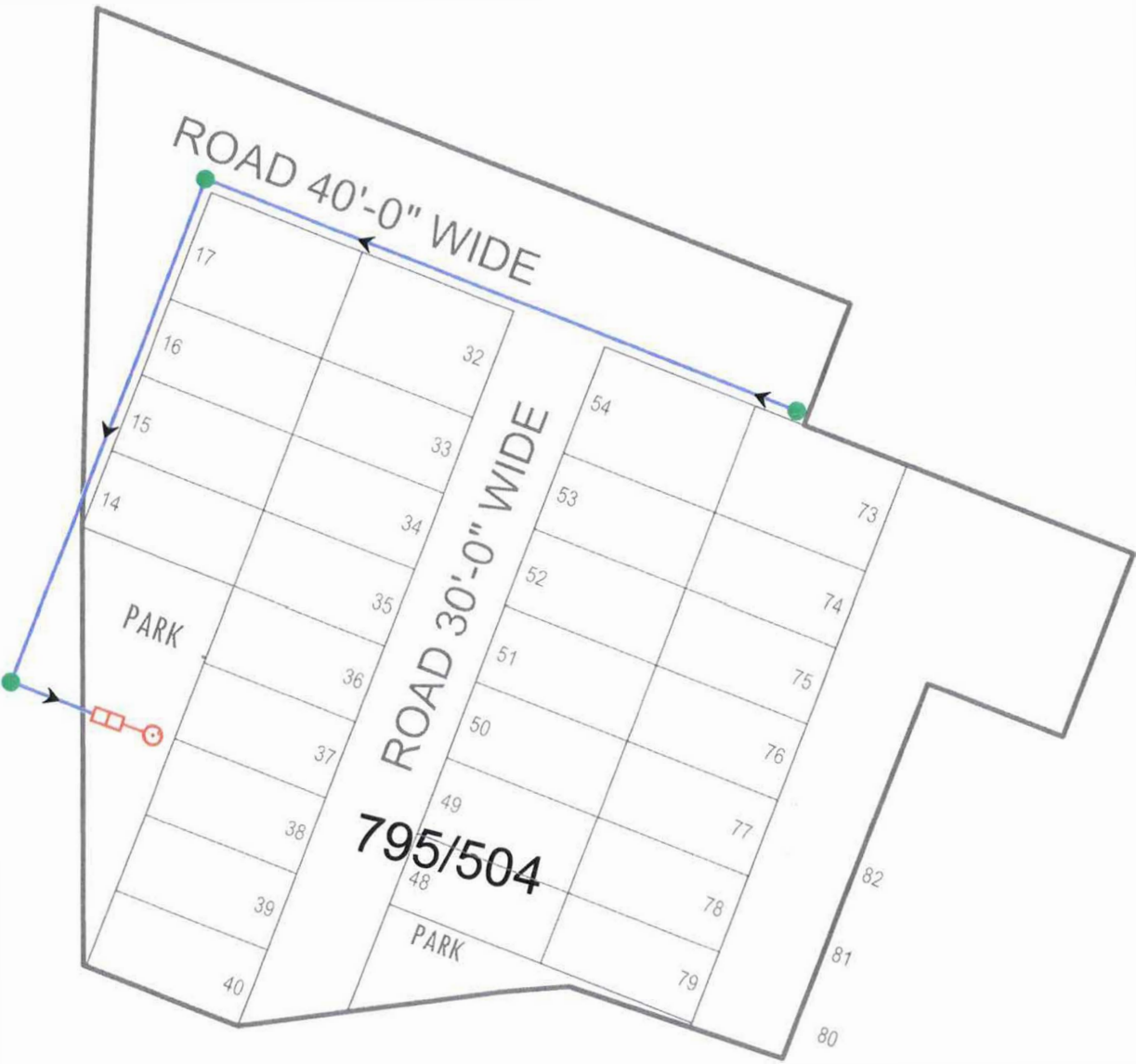


RAIN WATER HARVESTING PLAN OF "SANJEEVANI GREEN VIHAR PHASE-I"

KHASRA NO. 795/504 AT REVENUE VILLAGE - KOT JEWER, TEH.- MAUZMABAD, JAIPUR



Anuj Sharma
ANUJ SHARMA
B. Tech. (Civil)

LAY-OUT PLAN OF
(☐ ROADS , ☐ ELECTRICALS , ☐ SEWERLINE
☐ WATER SUPPLY & ☒ RAIN WATER HARVESTING)

LEGENDS :-

Rain Water Harvesting Legends:-

Symbols	Relation To	NOS./LEN.
	Manhole 450 X 450 X 600	00 Nos.
	Manhole 450 X 450 X 900/ as detail	03 Nos.
	200 MM uPVC PIPE	120.00 m
	Rainwater Harvesting Line Slope	
	Rainwater Harvesting Collection Pit	01 Nos.

NAME OF SCHEME :-
PROPOSED LAY-OUT PLAN OF
"SANJEEVANI GREEN VIHAR PHASE-I"
AT REVENUE VILLAGE - KOT JEWER, TEH - MAUZMABAD, JAIPUR
KHASRA NO - 795/504

LEGEND:-

SCHEME BOUNDARY -

SCHEME CORNER POINT-

SCALE :-

NORTH :-

SUBMITTED TO :-

Consultant:-

CadMax
PROJECTS (P) LTD.
301, Preet Tower, Opp. Police Headquarter,
Lafayette scheme, Tark Road JAIPUR (RAJ.) 302015
Ph: 0141-4113111, Mob: +91-9820045031
Website: www.cadmaxpro.com, e-mail: info@cadmaxpro.com

NO.	DATE	REMARKS

RELEASED FOR ☒ PRELIMINARY ☐ TENDER ☐ INFORMATION ☐ APPROVAL ☐ CONSTRUCTION