

PLUMBER TO MAKE
INLET PROVISION FROM
AQUAGUARD TO INSIDE
THE KITCHEN

Mounting Height	I D	Symbol	Description
ceiling	FAN/48"		CEILING FAN 48"
ceiling	FAN/30"		CEILING FAN 30"
7'-3"	BULB		Wall brackets as design & GANESH LIGHT POINT
BEAM	TL		1x40W WALL Tubelight
ceiling	CFL		CFL Ceiling light
4'-0"	SB		SWITCH BOARD
24"	TEL		TELEPHONE PT.
12"	PP		6 A PLUG point
24"	PP1		6 A PLUG point
12"	PP2		1 GA POWER POINT
3'-6"	PP3		1 GA POWER POINT
AS PER SITE	PP4		1 GA POWER POINT
3'-9"	PP5		1 GA POWER POINT
6'-9"	PP6		1 GA POWER POINT FOR CHIMNEY
AS PER VENDOR	PP-SAC		25A POWER POINT FOR SPLIT AC
1'-6"	PPF		1 GA POWER POINT FOR FRIDGE
AS PER VENDOR	S-AC		SPLIT AC
VENTILATOR HT.	EX		9" DIA FRESH AIR FAN
AS PER SITE	G		GEYSER
3'-6"	TV		TV POINT
7'-3"	B		BELL
4'-0"	BP		BELL PUSH
3'-6"	BS		WALL MOUNTED BED SIDE LAMP
BELOW STAIR	MCB		MCB DISTRIBUTION BOARD

REVISIONS :

S. NO.	DESCRIPTION	DATE

NOTE:

PROVISION / LOCATION OF AC STABILIZERS AND EXTERNAL UNITS TO BE FINALIZED BY THE AC CONSULTANT IN CONSULTATION WITH THE PROJECT ARCHITECT

Project:

**PROPOSED HOUSING SCHEME FOR
CASA 9
AT MANSAROVER, JAIPUR.**

**ELECTRICAL LAYOUT
OF EAST FACING PLOTS
(25'-0" X 50'-0")**

SCALE NOT TO SCALE

DATE 10 SEP. 2013

CADD/DEV.	VINOD P.T	Architect:	ANSHUMAN SHARMA
	PRG NO	JP/HSG/C9/EA07	REV/NO A1

DESIGN INC.

ARCHITECTS INTERIORS TURNKEY PROJECTS

34 BHAGAT VATIKA, RAJ BHAWAN ROAD
CIVIL LINES, JAIPUR - 302006.

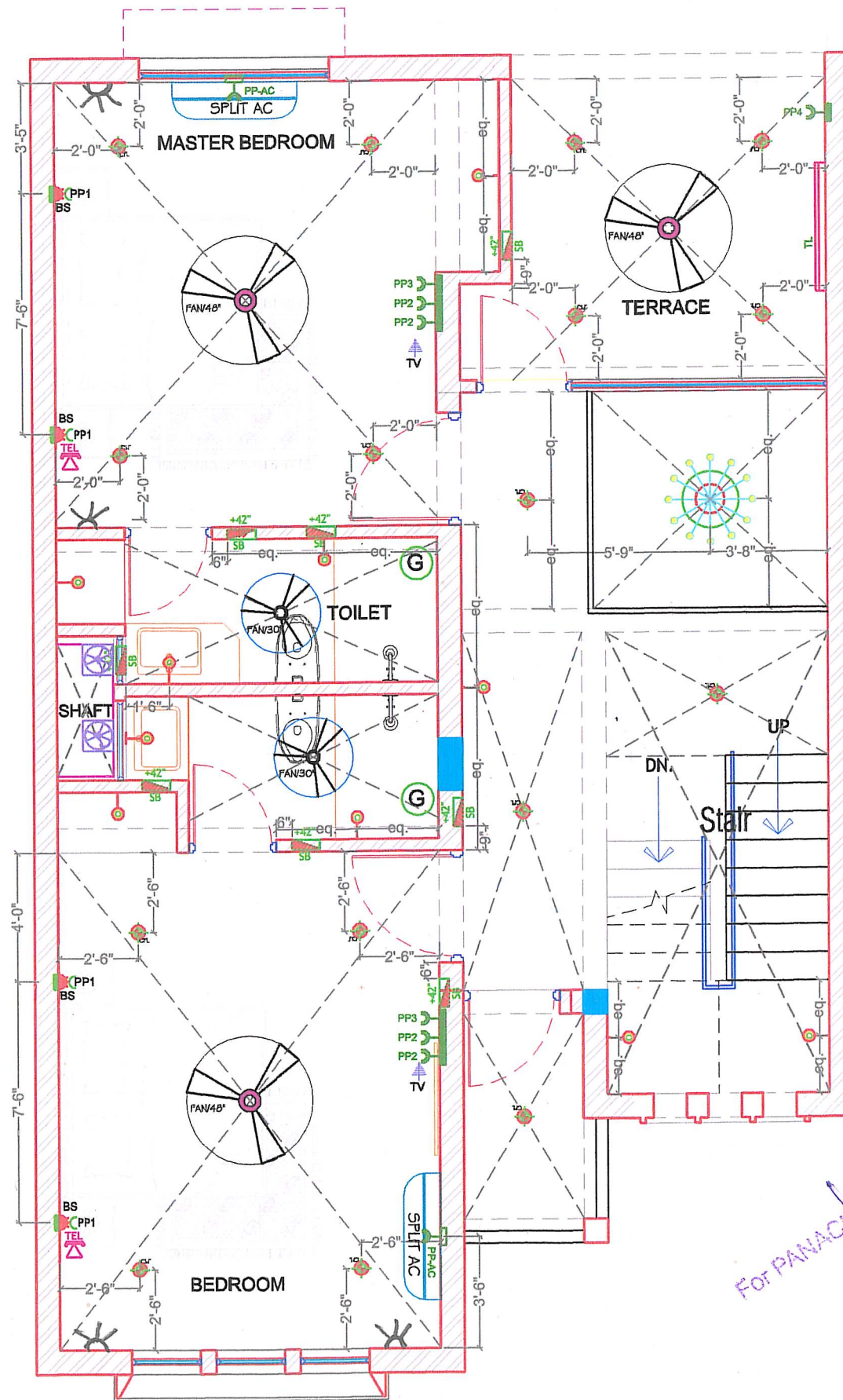
p: 0141 2220263, 9983831453
e: designincjaipur@gmail.com

THIS DRAWING IS COPYRIGHT, IT IS THE PROPERTY OF THE ARCHITECTS AND IS NOT TO BE REPRODUCED, COPIED, HANDED OVER TO A THIRD PARTY OR USED FOR ANY PURPOSE OTHER THAN THAT FOR WHICH IT HAS BEEN LOANED.

GROUND FLOOR PLAN

MAKE PROVISION FOR
LIGHT POINT

ANSHUMAN SHARMA
Authorized Signatory



FIRST FLOOR PLAN

LEGENDS:			
Mounting Height	ID	Symbol	Description
ceiling	FAN48"		CEILING FAN 48"
ceiling	FAN30"		CEILING FAN 30"
7'-3"	BULB		Wall brackets as design & GANESH LIGHT POINT
BEAM	TL		1x40W WALL Tubelight
ceiling	CFL		CFL Ceiling light
4'-0"	SB		SWITCH BOARD
24"	TEL		TELEPHONE PT.
24"	PP1		6 A PLUG point
12"	PP2		1 GA POWER POINT
9'-6"	PP3		1 GA POWER POINT
AS PER SITE	PP4		1 GA POWER POINT
AS PER VENDOR	PP-SAC		25A POWER POINT FOR SPLIT AC
AS PER VENDOR	S-AC		SPLIT AC
VENTILATOR HIT.	EX		9" DIA FRESH AIR FAN
AS PER SITE	G		GEYSER
9'-6"	TV		TV POINT
3'-6"	BS		WALL MOUNTED BED SIDE LAMP
CEILING	CH		CHANDELIER

For PANACHE BUILDTECH
Authorized Signatory

REVISIONS :

S. NO.	DESCRIPTION	DATE

NOTE:

PROVISION / LOCATION OF AC STABILIZERS AND EXTERNAL UNITS TO BE FINALIZED BY THE AC CONSULTANT IN CONSULTATION WITH THE PROJECT ARCHITECT

Project:

PROPOSED HOUSING SCHEME FOR
CASA 9
AT MANSAROVER, JAIPUR.

ELECTRICAL LAYOUT
OF EAST FACING PLOTS
(25'-0" X 50'-0")

SCALE NOT TO SCALE
DATE 29 OCT. 2013

CAD.DEV.

VINOD P.T

Architect:

ANSHUMAN SHARMA



E

DRG.NO

JP/HSG/C9/EA10

REV.NO

A1

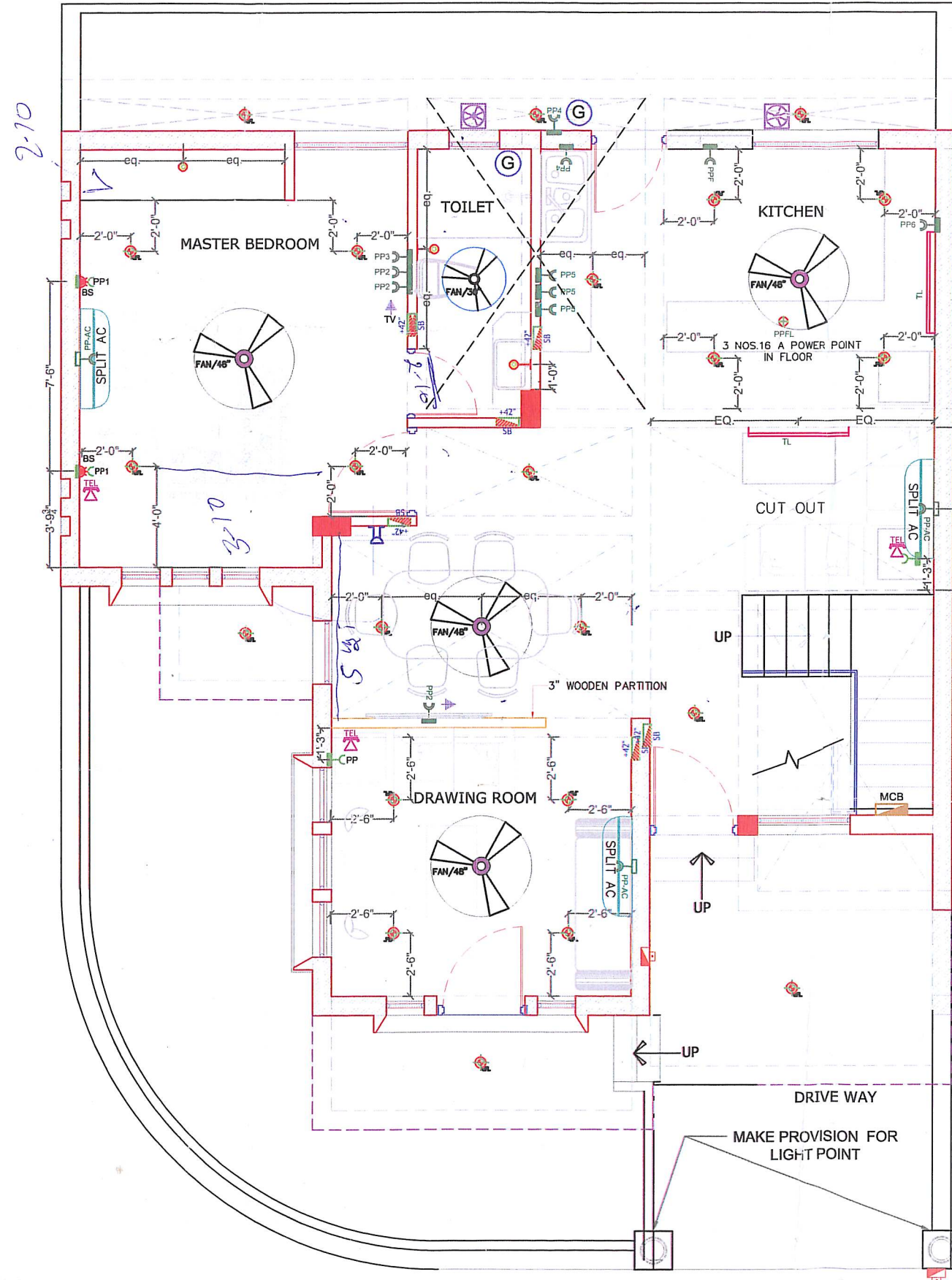
DESIGN INC.

ARCHITECTS INTERIORS TURNKEY PROJECTS

34 BHAGAT VATIKA, RAJ BHAWAN ROAD
CIVIL LINES, JAIPUR - 302006.

p: 0141 2220263, 9983831453
e: designincjaipur@gmail.com

THIS DRAWING IS COPYRIGHT. IT IS THE PROPERTY OF THE ARCHITECTS AND IS NOT TO BE REPRODUCED, COPIED, HANDED OVER TO A THIRD PARTY OR USED FOR ANY PURPOSE OTHER THAN THAT FOR WHICH IT HAS BEEN LOANED.



GROUND FLOOR PLAN

LEGENDS:			
Mounting Height	I D	Symbol	Description
ceiling	FAN/48"		CEILING FAN 48"
ceiling	FAN/30"		CEILING FAN 30"
7'-3"	BULB		Wall brackets as design & GANESH LIGHT POINT
BEAM	TL		1x40W WALL Tubelight
ceiling	CFL		CFL Ceiling light
4'-0"	SB		SWITCH BOARD
24"	TEL		TELEPHONE PT.
12"	PP		6 A PLUG point
24"	PP1		6 A PLUG point
12"	PP2		16A POWER POINT
3'-6"	PP3		16A POWER POINT
AS PER SITE	PP4		16A POWER POINT
3'-9"	PP5		16A POWER POINT
6'-9"	PP6		16A POWER POINT FOR CHIMNEY
AS PER VENDOR PP-SAC			25A POWER POINT FOR SPLIT AC
1'-6"	PPF		16A POWER POINT FOR FRIDGE
AS PER VENDOR S-AC			SPLIT AC
VENTILATOR HT.	EX		9" DIA FRESH AIR FAN
AS PER SITE	G		GEYSER
3'-6"	TV		TV POINT
7'-3"	B		BELL
4'-0"	BP		BELL PUSH
3'-6"	BS		WALL MOUNTED BED SIDE LAMP
FLOOR	PPFL		3 X 16A POWER POINT
BELOW STAIR	MCB		MCB DISTRIBUTION BOARD

REVISIONS :		
S. NO.	DESCRIPTION	DATE
1.	THE WIDTH OF REAR PROJECTION HAS BEEN REDUCED TO 2'-0" AS AGAINST THE ORIGINAL PROJECTION OF 3'-0" AS PER INFORMATION PROVIDED BY SITE ENGINEER. DRAWING IS REVISED ACCORDINGLY.	11-12-2013
2.	DOOR D3 IN KITCHEN IS BEING RELOCATED AS PER INFORMATION PROVIDED BY SITE ENGINEER. DRAWING IS REVISED ACCORDINGLY.	11-12-2013

Project: PROPOSED HOUSING SCHEME FOR **CASA 9** AT MANSAROVER, JAIPUR.

ELECTRICAL LAYOUT OF EAST FACING CORNERPLOTS (35'-0"X50'-0")

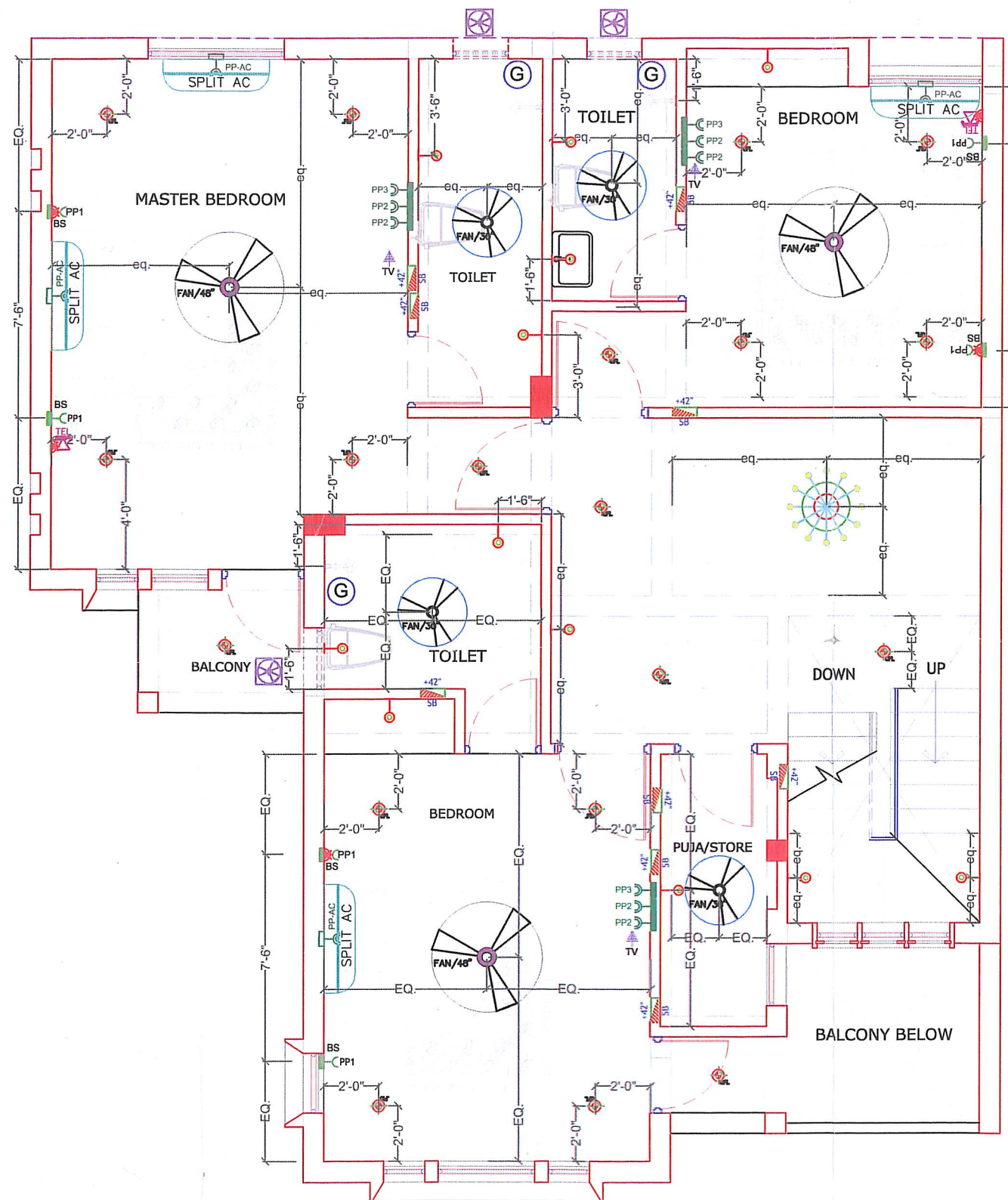
SCALE: NOT TO SCALE
DATE: 11 DEC. 2013

CAD.DEV. VINOD P.T. Architect: ANSHUMAN SHARMA

DESIGN INC.
ARCHITECTS INTERIORS TURNKEY PROJECTS
34 BHAGAT VATIKA, RAJ BHAWAN ROAD CIVIL LINES, JAIPUR - 302006.
p: 0141 2220263, 9983831453
e: designincjaipur@gmail.com

THIS DRAWING IS COPYRIGHT. IT IS THE PROPERTY OF THE ARCHITECTS AND IS NOT TO BE REPRODUCED, COPIED, HANDED OVER TO A THIRD PARTY OR USED FOR ANY PURPOSE OTHER THAN THAT FOR WHICH IT HAS BEEN LOANED.

For PANACHE BUILDTECH
Authorized Signatory



FIRST FLOOR PLAN

Mounting Height	ID	Symbol	Description
ceiling	FAN/48"		CEILING FAN 48"
ceiling	FAN/30"		CEILING FAN 30"
7'-3"	BULB		Wall brackets as design & GANESH LIGHT POINT
BEAM	TL		1x40W WALL Tubelight
ceiling	CFL		CFL Ceiling light
4'-0"	SB		SWITCH BOARD
24"	TEL		TELEPHONE PT.
24"	PP1		6 A PLUG point
12"	PP2		16A POWER POINT
3'-6"	PP3		16A POWER POINT
AS PER SITE	PP4		16A POWER POINT
AS PER VENDOR	PP-SAC		25A POWER POINT FOR SPLIT AC
AS PER VENDOR	S-AC		SPLIT AC
VENTILATOR HT.	EX		9" DIA FRESH AIR FAN
AS PER SITE	G		GEYSER
3'-6"	TV		TV POINT
3'-6"	BS		WALL MOUNTED BED SIDE LAMP
CEILING	CH		CHANDELIER

REVISIONS :

S. NO.	DESCRIPTION	DATE

THE STRUCTURAL DETAIL FOR THIS FLOOR HAS STILL NOT BEEN CORRECTED BY THE ENGINEER. THIS REQUIRES REVIEW & RECONSIDERATION.

Project:
PROPOSED HOUSING SCHEME FOR CASA 9 AT MANSAROVER, JAIPUR.

ELECTRICAL LAYOUT OF EAST FACING CORNERPLOTS (35'-0"X50'-0")
SCALE: NOT TO SCALE
DATE: 16 APR. 2014

CAD.DRV: VINOD P.T. Architect: ANSHUMAN SHARMA

DRG. NO. JP/HSG/C9/EA10 REV. NO. A1

DESIGN INC.
ARCHITECTS INTERIORS TURNKEY PROJECTS

34 BHAGAT VATIKA, RAJ BHAWAN ROAD CIVIL LINES, JAIPUR - 302006.

p: 0141 2220263, 9983831453
e: designincjaipur@gmail.com

THIS DRAWING IS COPYRIGHT. IT IS THE PROPERTY OF THE ARCHITECTS AND IS NOT TO BE REPRODUCED, COPIED, HANDED OVER TO A THIRD PARTY OR USED FOR ANY PURPOSE OTHER THAN THAT FOR WHICH IT HAS BEEN LOANED.

For PANACHE BUILDTECH
Authorized Signatory